

BATTLE McCARTHY©

Consulting Engineers & Landscape Architects



PROJECT:

Wansley Street, High Quality Terrace Housing

CLIENT:

London Borough of Southwark

ARCHITECTS:

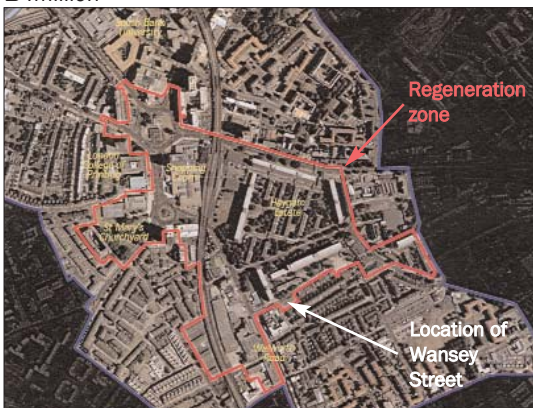
ECOS Ltd

BM SERVICES:

Environmental, Structural and Building Services Engineering

VALUE:

£4million



London UK Office
T: +44 (0)20 7440 8282
F: +44 (0)20 7440 8292
E: admin@battlemccarthy.com
www.battlemccarthy.com

DESIGN BRIEF

The Council's executive endorsed, for public consultation, a draft Framework for Development for the Elephant and Castle. The London Borough of Southwark, proposes to develop the Wansley Street site as part of its regeneration strategy for 4,500 new homes in the borough.

DESIGN INITIATIVES/ACTIONS UNDERTAKEN

ECOS Architects, Battle McCarthy Engineers and CORUS (nee British Steel) have prepared a Sustainable Terrace House Solution as a demonstration project for the community, London Borough of Southwark, GLA and across all Government Departments. In addition the design has been developed through public consultation with the community.

It is a priority of the project to demonstrate that high environmental quality, low energy, "smart" homes can be affordable and Egan Compliant through off-site manufacturing processes.

The project uses future-proofed building control and communication systems to provide long-term healthy and highly accessible environments suitable for our aging population.

A terrace of 7 dwellings is proposed, which are a mixture of lower, upper maisonettes and flats. The proposals take their inspiration from the flexibility and adaptability of the Victorian and Georgian terrace. The proposed designs however, include advanced building management technology, advanced construction techniques; modern renewable energy technology and current thinking on urban design solutions for flexibility and adaptability.

The proposals demonstrate a significant improvement over the time and quality of traditional construction; the advantages of best-practice procurement; the benefits of incorporating sophisticated building management systems, greatly reduced environmental impact through utilising renewable energy systems and highly thermally efficient designs and technology. Ultimately the project demonstrates one implementation of best-practice sustainable design and sets the standard for future developments in the Elephant and Castle area.



Elevation in context on Wansley Street



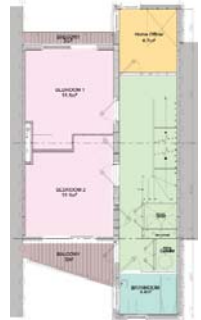
1bed flat first and second



Integration of the scheme into the new town square within the Elephant and Castle redevelopment



3bed maisonette upper level



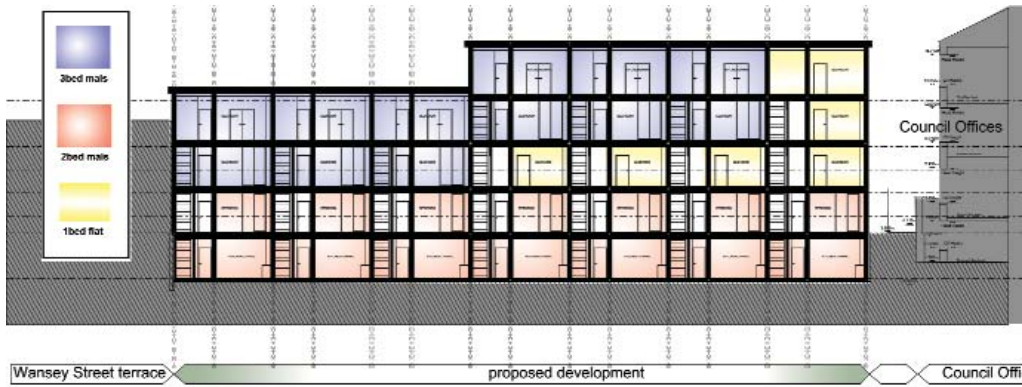
3bed maisonette entrance level



2bed maisonette ground level



2bed maisonette basement level



Plan and section through the development

