

PROJECT:
Haworth Center, Holland, Michigan

CLIENT:
Haworth Inc.

ARCHITECTS:
Perkins & Will

BM SERVICES:
Structural & Building Services (MEP) Engineering,
Environmental Design & Landscape Architecture,
Sustainable Masterplanning

VALUE:
Classified

DESIGN BRIEF

To provide a sustainable approach for the redevelopment of Haworth's existing headquarters building with Perkins & Will architects. The challenge of the project was to develop an environmentally sensitive and inspirational workplace that met the needs of a world-leading office furniture manufacturer.

LEED Silver rating

London UK Office
T: +44 (0)20 7440 8282
F: +44 (0)20 7440 8292
E: admin@battlemccarthy.com
www.battlemccarthy.com

DESIGN INITIATIVES/ACTIONS UNDERTAKEN

The main aim of this project was to improve on the internal environment of an existing three-storey headquarters building and office furniture manufacturing and assembly plant.

Environmental Design

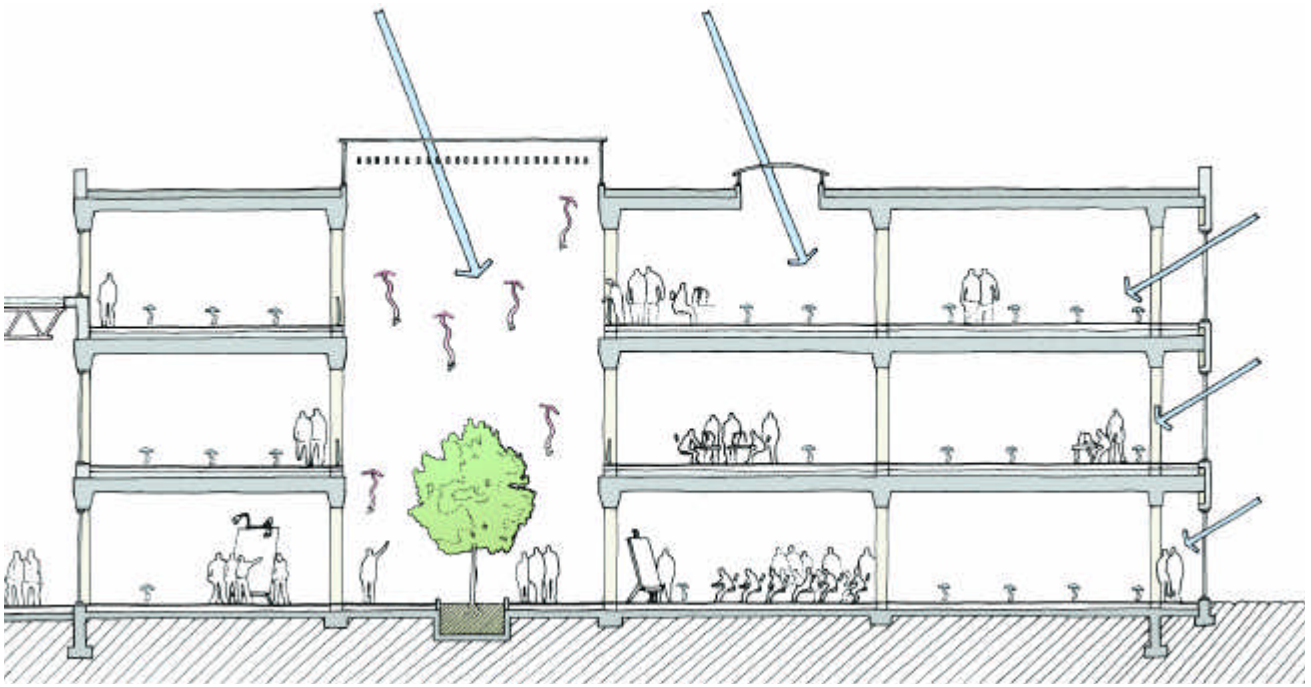
Due to the poorly daylight existing office space, the initial focus of the design team was to provide an environment for staff that would allow them to have a truly daylight working area, or at least a perception of daylight - regardless of their location within the office building. This is achieved by proposing a new fully glazed north facing facade, internal atria, light wells and the adaptation of one bay of the adjacent factory to a winter garden/activity zone.

A displacement ventilation system was also proposed providing a solution that would make the most of thermal mass and natural ventilation, whilst utilising Haworth's own raised floor system. This raised floor solution, supplemented by passive chilled beams would allow for greater control over heating and cooling loads.

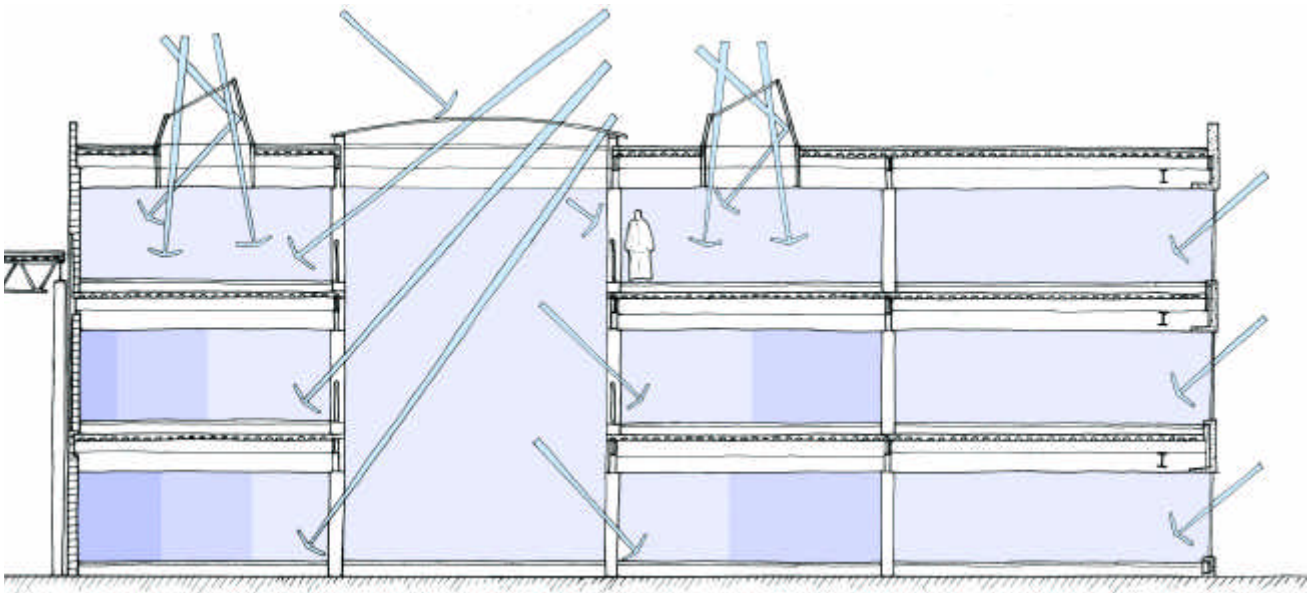
The inclusion of internal atria provide an opportunity to enhance the quality of the working environment, through the incorporation of internal planting, art installations and the provision of relaxation and exercise zones for employees, in spite of external climatic conditions.

Improving the functionality, as well the attractiveness of the external landscape is key to realising the potential to; promote well-being and improve productivity amongst staff; create a destination for visitors; reinforce the identity of the company; provide an educational resource and increase local Biodiversity.

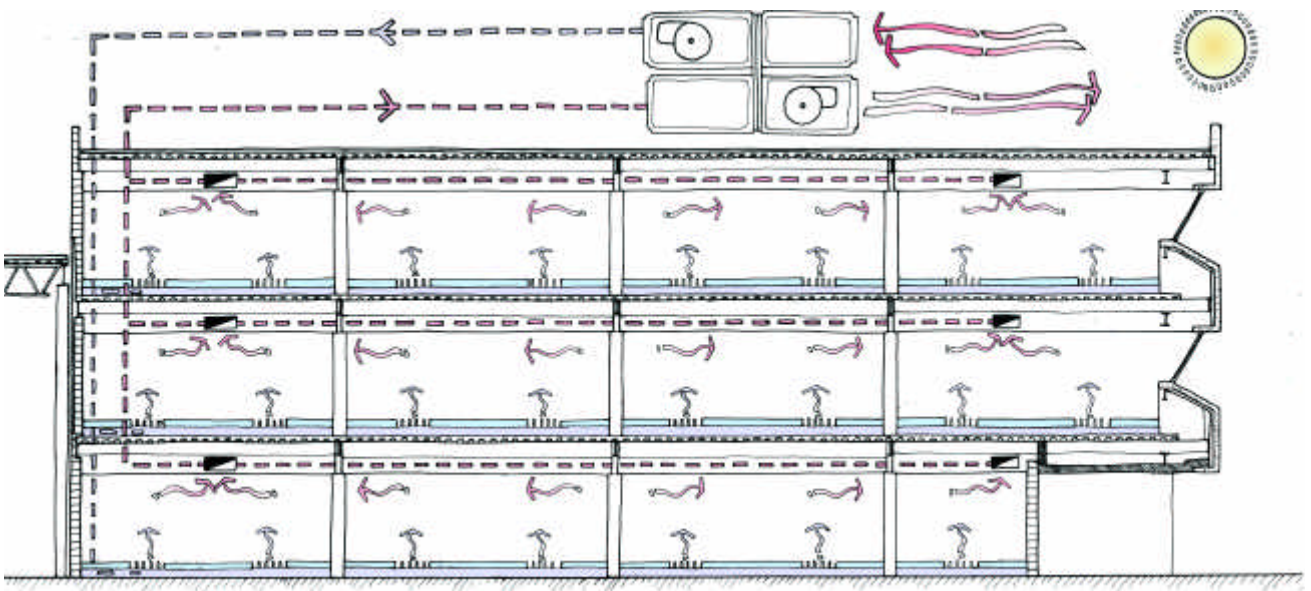
The inclusion of a small wind farm at the Haworth site that can produce 20% of the energy needs via renewable means is fundamental to obtaining a LEED "Gold" to "Platinum" rating. This provides very beneficial aspects in the form of a reliable electricity supply and lower site emissions.



Overall Strategy - exposed thermal mass and underfloor displacement ventilation, plus daylight and nature visible throughout the offices



Daylight Strategy - to optimise the provision of natural light to workstations



Ventilation Strategy - utilising underfloor displacement ventilation with passive chilled beams to reduce energy consumption