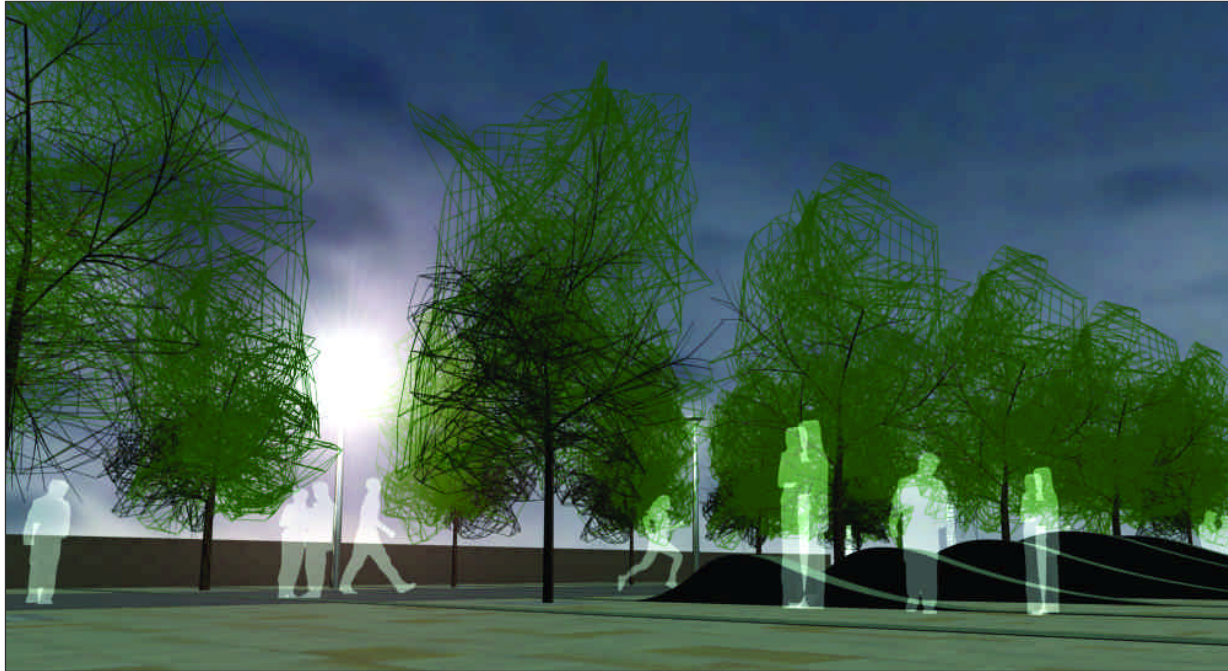


# BATTLE McCARTHY ©

Consulting Engineers & Landscape Architects



## PROJECT:

Hull Island Wharf, Kingston-Upon-Hull

## CLIENT:

Yorkshire Forward

## ARCHITECTS:

DLA Architects

## BM SERVICES:

Landscape Architecture

## VALUE:

Classified

## DESIGN BRIEF

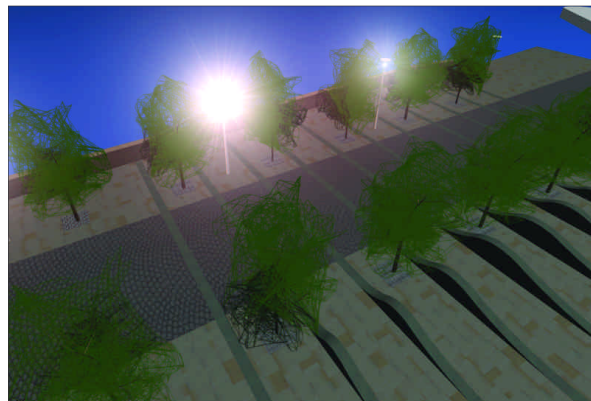
To develop the landscape design for a high profile city centre riverside office development. The project is the first stage of the strategic masterplan for the regeneration of Kingston-Upon Hull and includes a new public square and riverside walk.

## DESIGN INITIATIVES/ACTIONS UNDERTAKEN

Located in a prominent position on the banks of the Humber, the successful redevelopment of the Island Wharf site is seen as key to the continuing renaissance of the city centre. Set in the context of recent new developments within the city and the desire to link existing core areas with the Humber Quays, the opportunity exists to create a series of civic spaces that will compare favourably with the best new public realm found anywhere in Europe, raising the profile of the city regionally, nationally and internationally.

A strong landscape structure and spatial hierarchy was developed to give the scheme legibility, resolve conflicts between vehicles and pedestrians and offer greater freedom of movement between the city and the river edge.

A continuous riverside walk allows for a range of views and experiences of the Humber and the docks. The new public plaza provides a high quality space and appropriate setting for the proposed buildings. A space for people to linger in, pass through, or admire, the plaza will be sculptural and urban with vernacular and modern materials used in a contemporary manner to reflect the quality of the development.



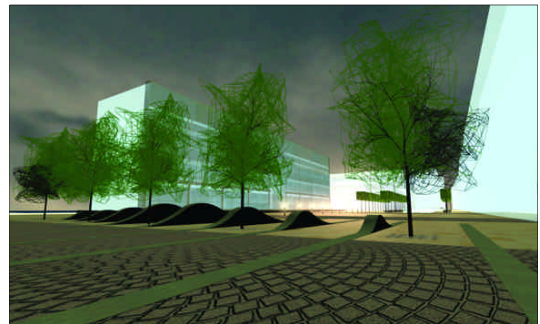
London UK Office  
T: +44 (0)20 7440 8282  
F: +44 (0)20 7440 8292  
E: admin@battlemccarthy.com  
www.battlemccarthy.com



Landscape Masterplan

Design principles included:

- Respond to microclimate and create a series of different spaces that provide maximum opportunity for use and enjoyment throughout the year.
- Use of contemporary and salvaged materials to create a language that reinforces the unique character of the river and reflects the prestige of the development.
- Generate a pattern and rhythm of materials, street furniture and planting to articulate the geometry of the new buildings and their relationship with the city core.
- High quality craftsmanship and materials.
- Recognise and exploit the vernacular character to reinforce the sense of place and extend the maritime theme to bespoke elements of street furniture.
- River edge treatments which are sympathetic to historic features on the site.
- Information points which offer information on the maritime history of the site and the ecological significance of the river.
- Ecological approach to the river edge to reinforce the estuarine character of the site.
- Collection, reuse and recycled rainwater.



View across the plaza from the bull nose



View of the fountains



Sectional elevation of the bullnose pier