

BATTLE McCARTHY ©

Consulting Engineers & Landscape Architects



PROJECT:

House of Representatives, Nicosia, Cyprus

CLIENT:

Government of Cyprus

ARCHITECTS:

Kohn Pedersen Fox Associates

BM SERVICES:

Multi-Disciplinary Engineering Design

VALUE:

Classified

DESIGN BRIEF

The competition brief requests the following enlightened building design in response to the major European and global issues: Buildings account for approx 50 per cent of the energy used within the European continent, and approx 50 per cent of the carbon dioxide produced that is substantially responsive for increased global warming.

Solutions must take into account the climatic conditions of Cyprus and take full advantage of them so as to save money both in the installation and also the operation of the various electrical and engineering services of the building.

London UK Office
T: +44 (0)20 7440 8282
F: +44 (0)20 7440 8292
E: admin@battlemccarthy.com
www.battlemccarthy.com

DESIGN INITIATIVES/ACTIONS UNDERTAKEN

The design has responded to these demands by utilising an innovative combination of structural elements, passive cooling and ventilation techniques, and the intelligent optimisation of building systems to create a unique solution that is ideally suited to the climate of Nicosia.

- Thermal mass of the building is used to provide cooling in the summer using night-time ventilation.
- Heavy weight precast concrete roof plane in earthquake zone.
- A sculpted structural canopy over the foyer area filters light, heat and sound
- Structural forms and careful manipulation of materials are used to provide environmental moderation
- Ventilation systems are driven by the wind and solar radiation
- Filtered light is provided by the wind and solar radiation
- Passive cooling techniques are utilised to reduce reliance on mechanical refrigeration.
- Rainwater is collected and stored for use in landscaping and recycling systems.

In addition the building is designed not only to keep energy demand low, but also to collect any energy required from the natural environment:-

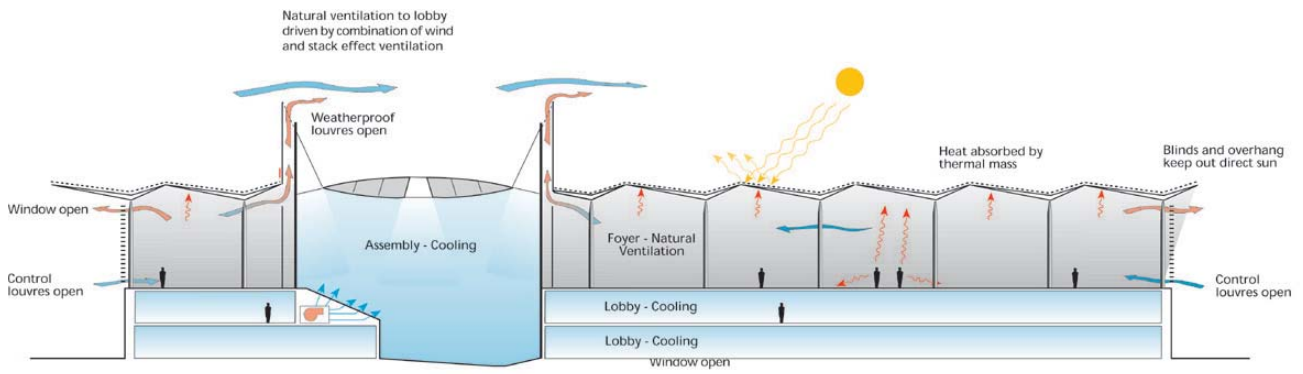
- Solar energy
- Daylight
- Wind
- Rainwater

On an island, such as Cyprus where all fuels have to be imported and therefore carry a surcharge, the need for reducing energy consumption is paramount.

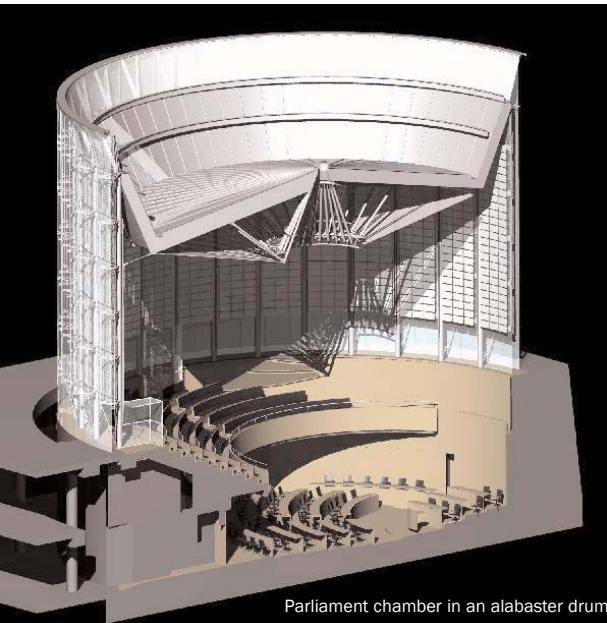
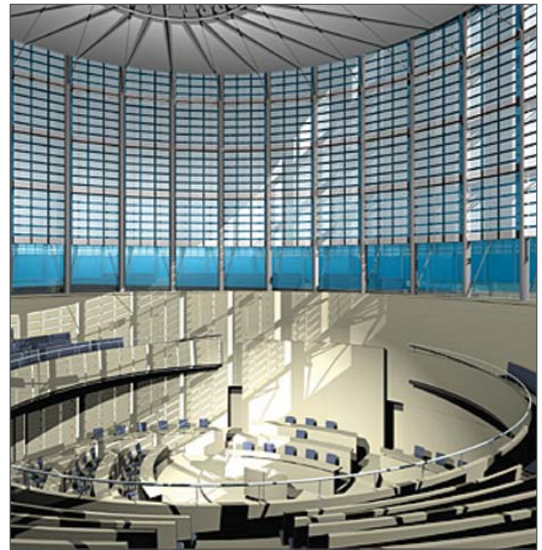
AWARDS

Royal Academy

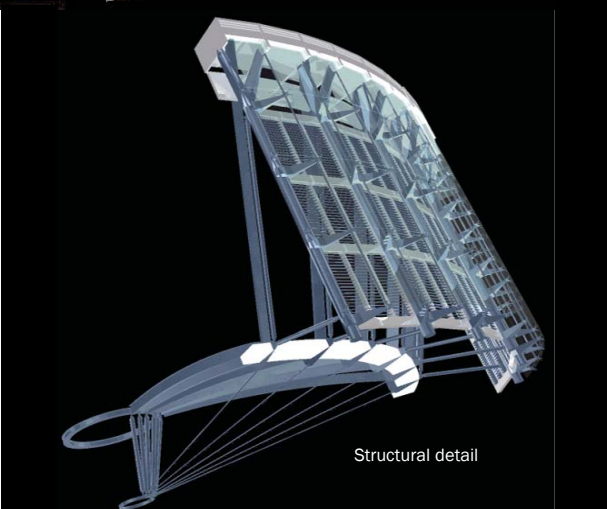
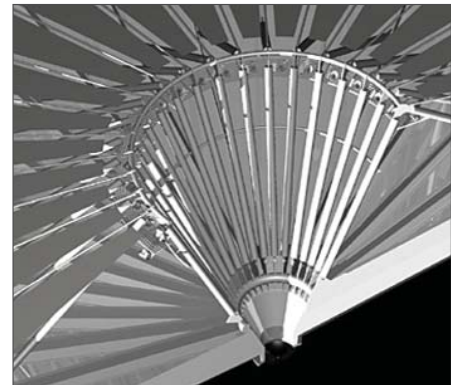
2001



Midsummer's Day



Parliament chamber in an alabaster drum



Structural detail

