

BATTLE McCARTHY©

Consulting Engineers & Landscape Architects



PROJECT:
Eastside Locks, Birmingham

CLIENT:
Goodman

ARCHITECTS:
AFR

BM SERVICES:
Sustainability masterplanning, building massing and sustainability strategy in collaboration with BCC and AWM.

VALUE:
Classified

DESIGN BRIEF

Eastside is Birmingham's biggest physical regeneration project, and is part of Birmingham City Council Development Directorate's Planning and Regeneration Service.

It is a key component in Birmingham's renaissance, preparing the city for the future by encouraging investment and job creation, as well as economic and cultural growth.

The ten-year project presents the challenge of regenerating 170 hectares (420 acres) to the east of the city centre, expanding the size of the city centre through the development of high quality urban design.

London UK Office
T: +44 (0)20 7440 8282
F: +44 (0)20 7440 8292
E: admin@battlemccarthy.com
www.battlemccarthy.com

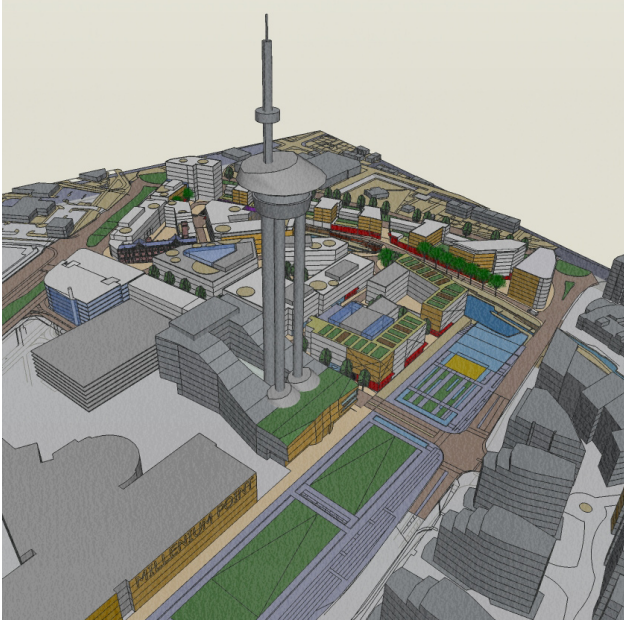
The project will also extend the network of public squares, spaces and streets that have been successfully developed across the city centre.

The initiative unites public and private sector organisations in order to develop a learning, technology and heritage quarter for the people of Birmingham, and provides an example of best practice for sustainable development.

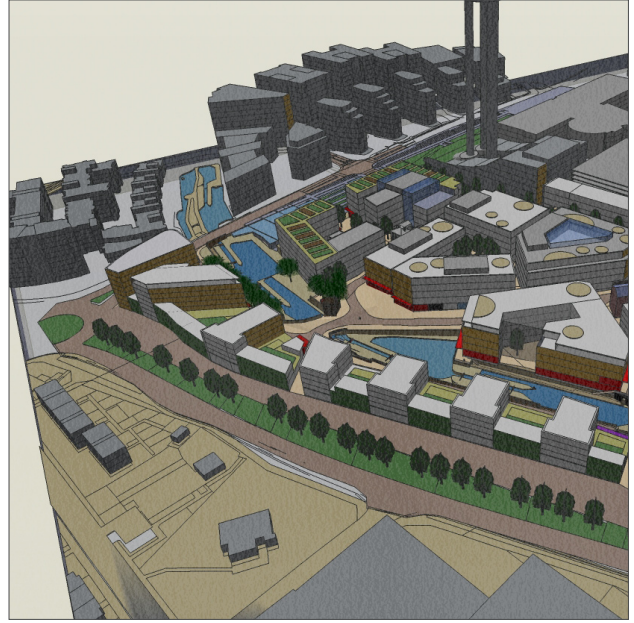
DESIGN INITIATIVES/ACTIONS UNDERTAKEN

XX
XXXXXXX

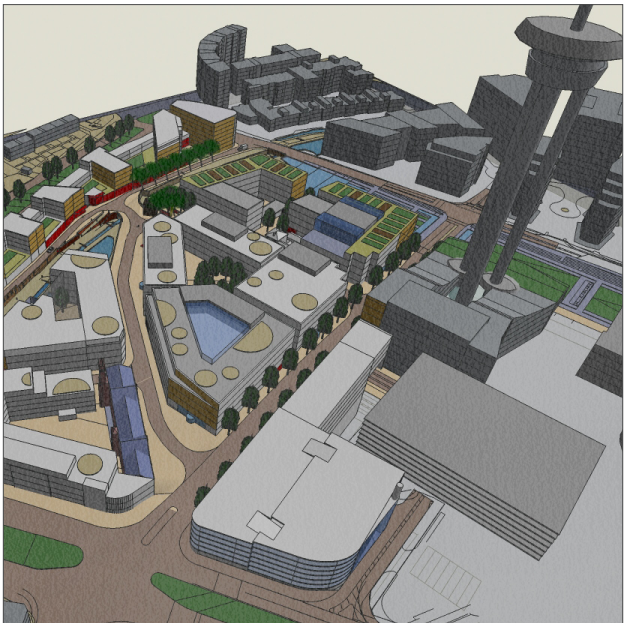
The plan develops a series of mixed-use neighbourhoods that are connected through a landscape infrastructure of public parks, existing historic canals and re-invigorated streets. It incorporates commercial, residential, educational and cultural quarters which carefully knit into the existing historic neighbourhoods.



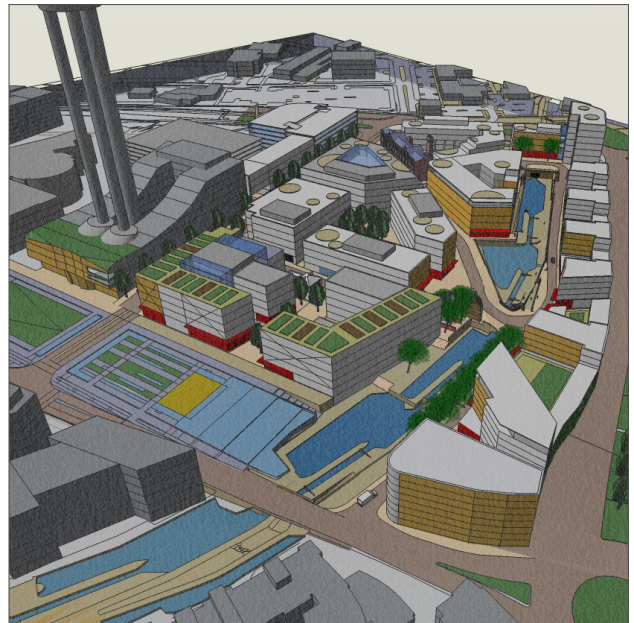
North East View



North East View



North West View



South East View