

BATTLE McCARTHY®

Consulting Engineers & Landscape Architects



PROJECT:

New York Jets Stadium, New York, USA

CLIENT:

New York Jets Development

ARCHITECTS:

Kohn Pedersen Fox Associates

SUSTAINABILITY CONSULTANTS:

Battle McCarthy

MEP ENGINEERS:

Flack & Kurtz

VALUE:

£750million

CONTRACT DATES:

2001 - Ongoing

DESIGN BRIEF

The stadium has been developed adjacent to the Jacob K. Javits Convention Center and stretches over the West Side rail yards, from 30th Street to 34th Street along the Hudson River. The complex will become the New York Sports and Convention Center and has been designed with an Olympic bid in mind for 2012. The New York Jets stadium will seat 75,000 people with plans for a retractable roof and moveable seating to allow reconfiguration of internal space.

Target LEED Platinum rating

London UK Office
T: +44 (0)20 7440 8282
F: +44 (0)20 7440 8292
E: admin@battlemccarthy.com
www.battlemccarthy.com

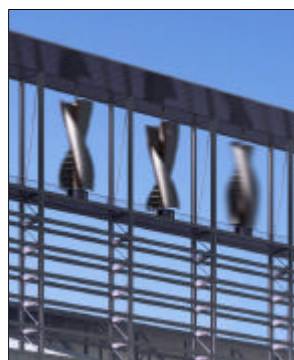
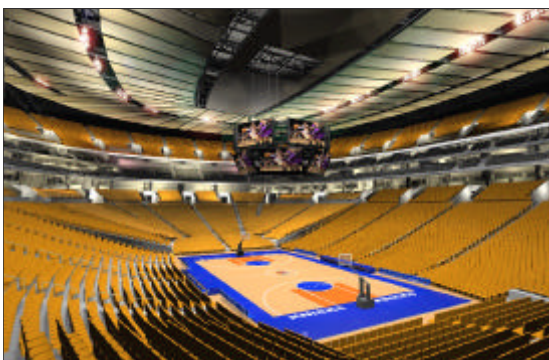
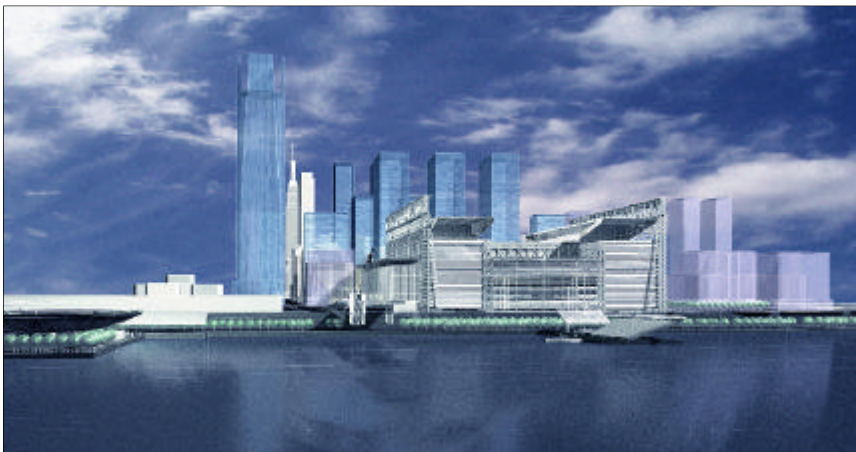
DESIGN INITIATIVES/ACTIONS UNDERTAKEN

The design sets new standards in the environmental development of stadia, and combines the following key attributes:

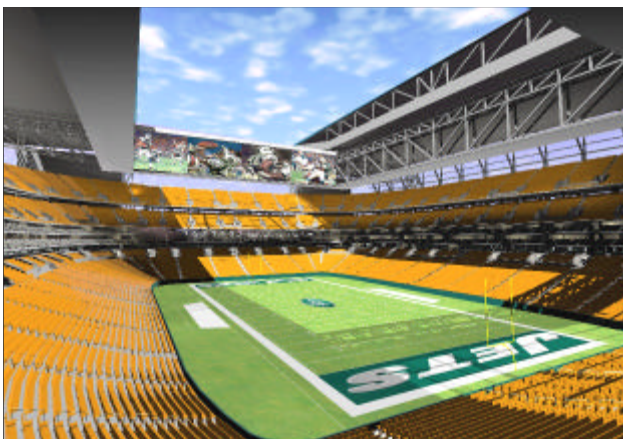
- 34 Vertical wind turbines providing over 587MWh and 60% of football area needs
- 20,000 SF photovoltaic cells providing 225 Mwh for football needs, with possible expansion to 500MWh.
- 5000 SF of solar thermal collectors providing 298 MWh (fuel consumption equivalent) for hot water demand at winter events as well as 1000 cooling tonne hours for an absorption chiller in summer.
- A rainwater collection system with recycling and on-site providing enough water for all non-potable needs in a ten-minute rainfall event.
- Landscape designed as an active system that not only cleans surface water, but also acts as an air conditioner cleaning the air around and pre-cooling it.
- Innovative air-conditioning systems for the concession and seating areas.
- Incorporating these innovative technologies the stadium is expected to be a net exporter of energy, and will be Climate Positive

AWARDS

Building Services Journal International Achievement Award	2004
The Architecture Review Future Project Prize MIPIM	2004



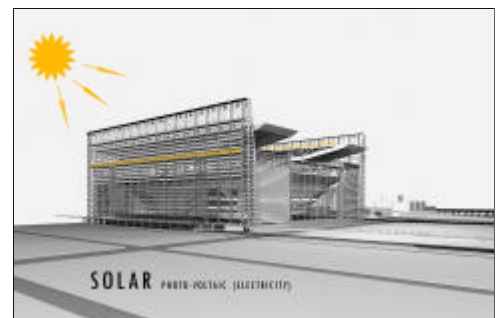
Retractable Roof - Open and Closed



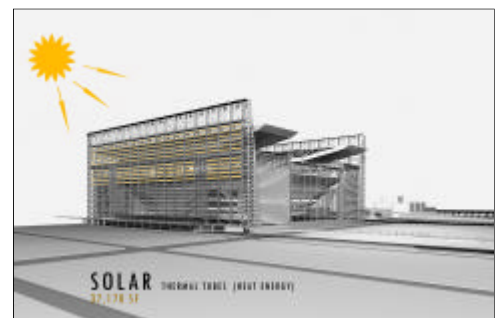
- Roof rainwater collection
- 10 minute average rainfall produces enough water for non-potable needs.



- 34 Vertical Axis wind Turbines
- Produces 587 MWh electricity per annum
- Equates to 60% of football needs



- 20,000 sf PV Cells
- Produces up to 500 MWh electricity per annum



- 5000 sf of Solar Thermal Collectors
- Produces 298 MWh for Arena event in winter
- Produces 1000 cooling tonne hours in summer

