

BATTLE McCARTHY ©

Consulting Engineers & Landscape Architects



PROJECT:

The Commune by the Great Wall of China

CLIENT:

The Commune

ARCHITECTS:

KNTA Architects

BM SERVICES:

Structural Engineering

VALUE:

\$240,000

DESIGN BRIEF

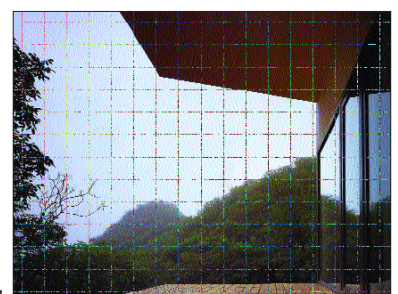
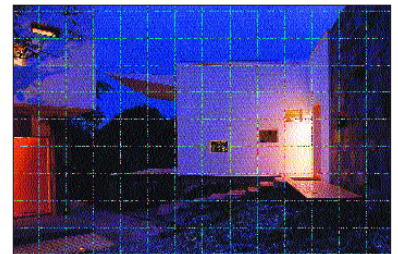
To design a prototype luxury villa near The Great Wall of China. The plan was to reproduce the first phase of eleven prototypes into a further 40 with the end result a high-end boutique hotel resort. The entire masterplan would be named, The Commune by the Great Wall.

DESIGN INITIATIVES/ACTIONS UNDERTAKEN

Battle McCarthy were involved in the scheme design for House 9. House 9 is elegantly simple, a duo of L-shaped buildings loosely locked into the shape of a centre parallelogram. The whole house was built from the 'L' type plan, so that a loose inclination roof design could be applied. It was considered that its direction could be changed and that it could be reversed. The direction of the angle is characterised by the basic 'L' shape. The inclination of the site determines the orientation of the 'L' shape building and of the roof's slope.

The structure of reinforcing concrete with a thicker girde was proposed, using traditional rural and common Chinese gray bricks and standard 12 cm angle wood rather than local varieties.

The unusual dimensions (span and height) of the project determined its design when using low-tech standards and common materials. The original construction materials of wood and bricks were only utilised to cover or hide the concrete and steel structure.



Shading

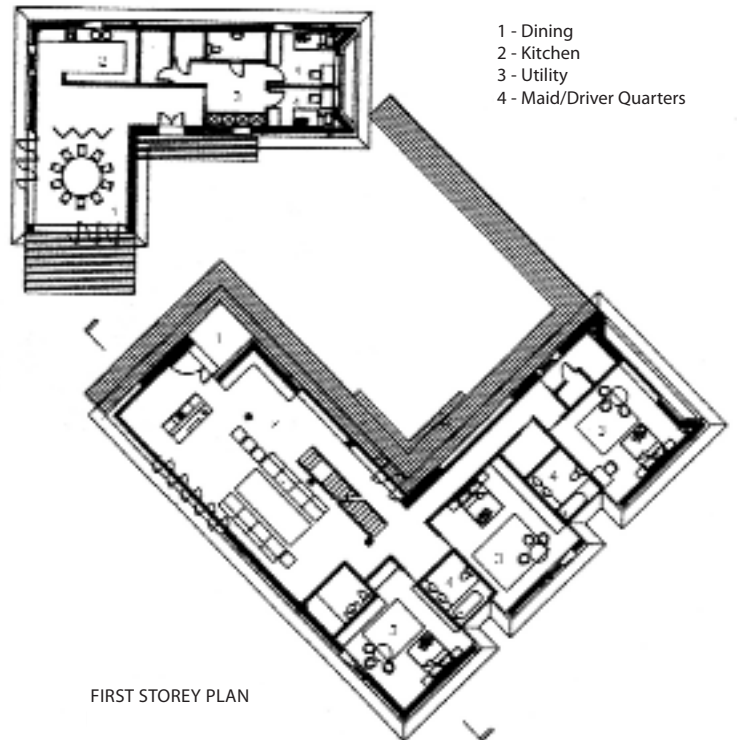
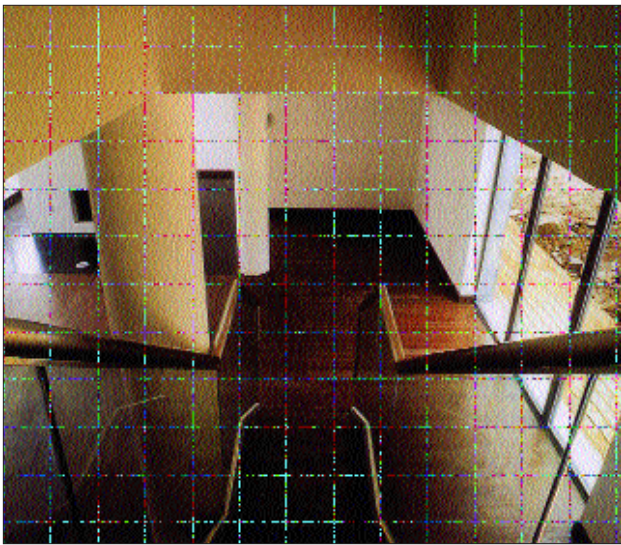
London UK Office
T: +44 (0)20 7440 8282
F: +44 (0)20 7440 8292
E: admin@battlemccarthy.com
www.battlemccarthy.com



The Commune 'House 9'

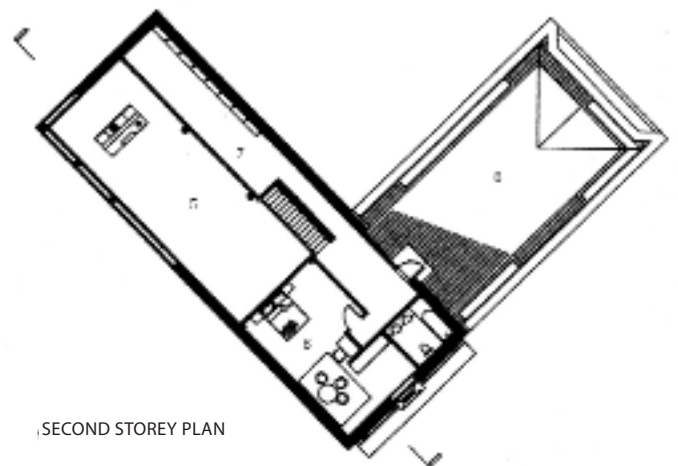


Section



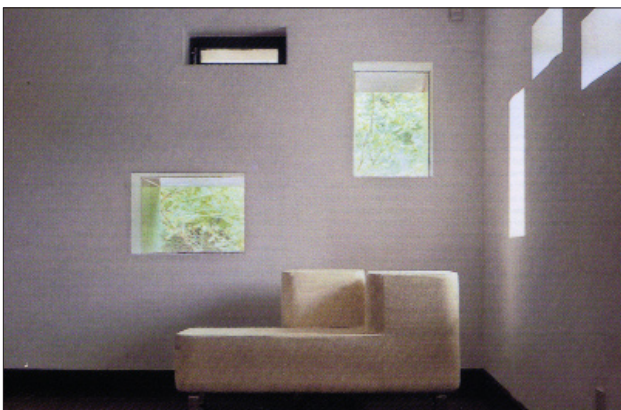
- 1 - Dining
- 2 - Kitchen
- 3 - Utility
- 4 - Maid/Driver Quarters

FIRST STOREY PLAN



SECOND STOREY PLAN

- 1 - Entrance
- 2 - Living Room
- 3 - Bedroom
- 4 - Bath
- 5 - Void over living room
- 6 - Study
- 7 - Master bedroom with ensuite bath
- 8 - Terrace



The interior