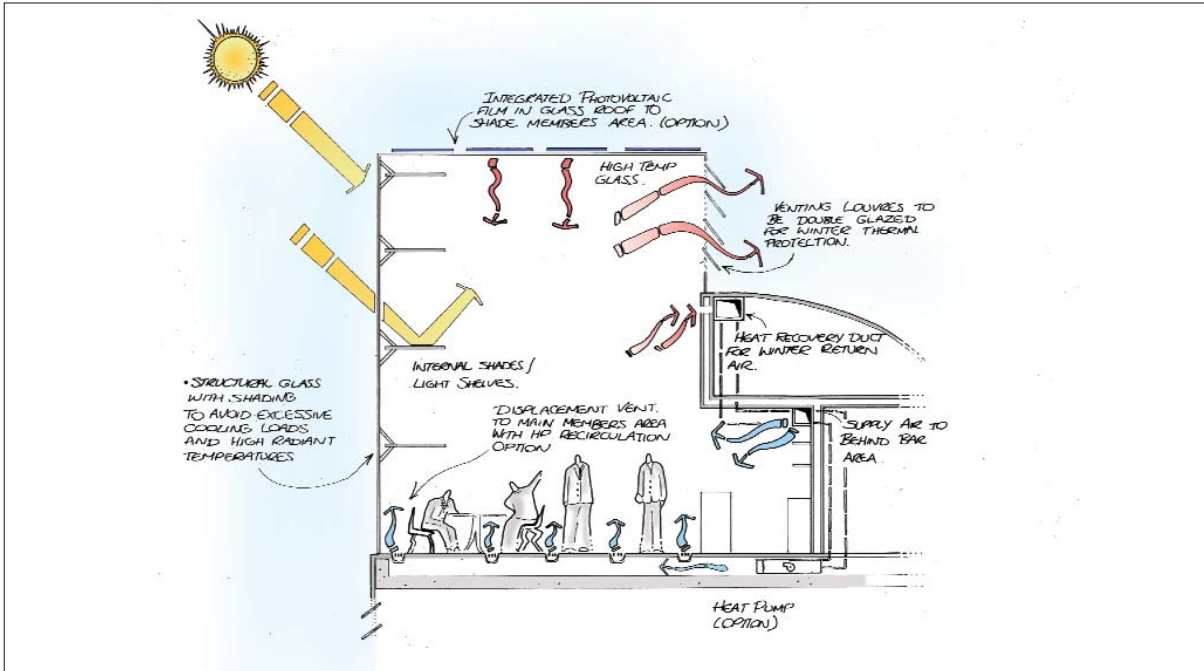


BATTLE McCARTHY ©

Consulting Engineers & Landscape Architects



PROJECT:

The Royal Bayswater Hotel

CLIENT:

Classified

ARCHITECTS:

Alsop Architects

BM SERVICES:

Building Services & Environmental Engineering for new Bayswater Hotel

VALUE:

£10million

DESIGN BRIEF

The client's brief required the provision of a high quality hotel that would be easily marketable.

DESIGN INITIATIVES/ACTIONS UNDERTAKEN

Key decisions were made as a result of the solar and daylight issues which resulted in careful consideration of the facade.

To maintain adaptability it was necessary to give each space equal opportunity for the full range of services to be connected if required. The development of the services distribution design has achieved this by a 'primary distribution' system that allows each of the available services to be invisibly distributed to any part of the space. This gave the opportunity for complete flexibility in the layout of the space regardless of its use.

To ease, and therefore speed, the construction and to help achieve the target of zero defects, it was intended to prefabricate the main elements of the system which would ensure the integration and quality of the services/structural units. The prefabricated sections are as large as possible, within the constraints of commercial transportation, to reduce shipping time and costs and to achieve the optimum speed of construction.

A mixed mode ventilation system was specified to reduce energy consumption and maximise natural ventilation.

Further energy savings were proposed by a use of local combined heat and power (CHP) system.

A water conservation strategy combines the use of water efficient appliances with greywater recycling and rainwater harvesting measures. In addition, a borehole cooling system was proposed.



London UK Office
T: +44 (0)20 7440 8282
F: +44 (0)20 7440 8292
E: admin@battlemccarthy.com
www.battlemccarthy.com

