

BATTLE McCARTHY©

Consulting Engineers & Landscape Architects



PROJECT:

Middlesex University Real Tennis Courts

CLIENT:

Middlesex University

ARCHITECTS:

Pringle Richards Sharrat Architects

BM SERVICES:

Structural and Environmental Engineering

VALUE:

£1.8million

DESIGN BRIEF

To design a new Real Tennis Centre for the University of Middlesex Hendon campus. The centre is part of a large racket sports addition to the existing university sports facilities.

The phased construction of the racket-sport complex will eventually include;

- 7 squash courts
- real tennis court
- indoor and an outdoor aerobics studio
- social facilities
- changing rooms facilities
- 2 outdoor tennis courts
- landscaping works.

London UK Office
T: +44 (0)20 7440 8282
F: +44 (0)20 7440 8292
E: admin@battlemccarthy.com
www.battlemccarthy.com

DESIGN INITIATIVES/ACTIONS UNDERTAKEN

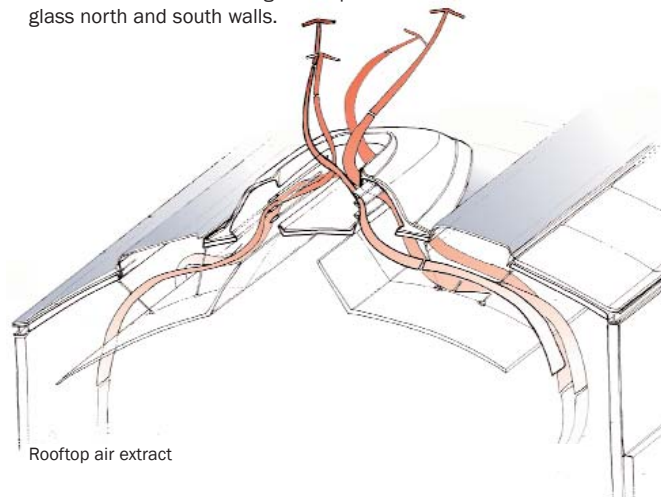
After an initial feasibility exercise and large-scale planning application by Pringle Richards Sharrat Architects, Battle McCarthy were involved in the realisation of the Real Tennis Court building.

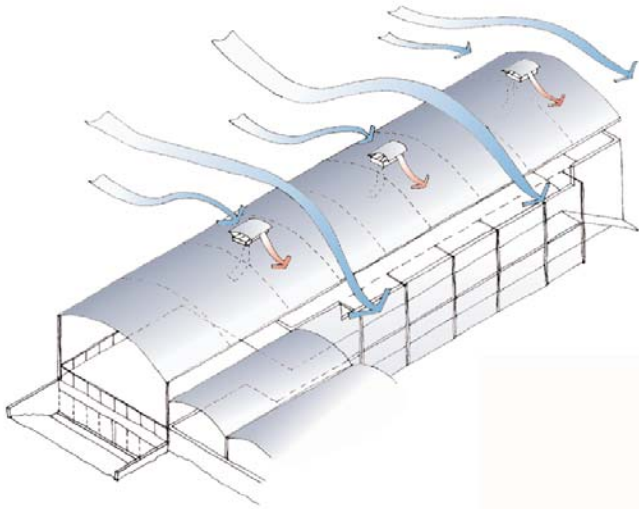
The sports facilities masterplan involves the integration of new and existing buildings in a logical organisation which due to funding constraints must be constructed in phases.

The Real Tennis Court Building includes;

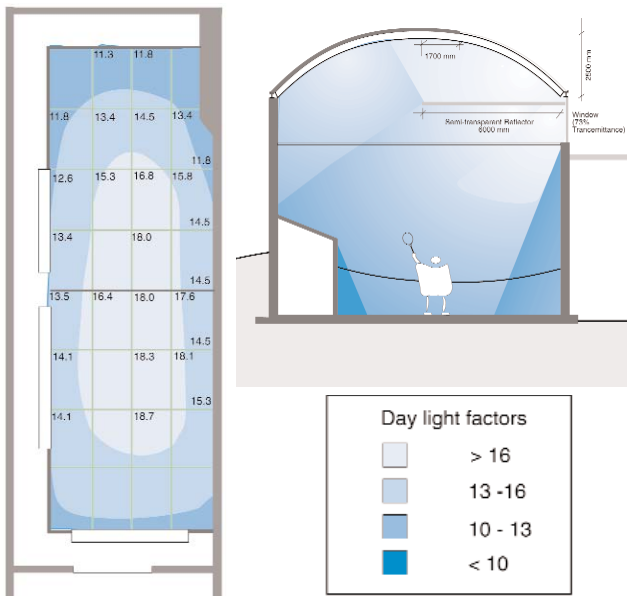
- cafe/bar
- workshop and office for coaches
- state of the art CCTV coverage for the court and a video editing suite
- outdoor viewing terrace
- indoor courtside viewing gallery

Central to Battle McCarthy's environmental role with the design was the building's lighting strategy. Artificial sky modelling was used to ensure an even quality of light with minimal shadow casting. The large barrel roof has 3 strip windows to let in north light which is reflected off internal lightshelves onto the soffit to disperse light and reduce contrast. Diffuse light also penetrates the translucent fibre glass north and south walls.





Utilising the prevailing wind pattern for air extract through roof cowls



Daylight modelling and sizing of internal lightshelves



View down onto the court



The spectator gallery with closed circuit video footage



The raised spectator gallery



The central tennis court