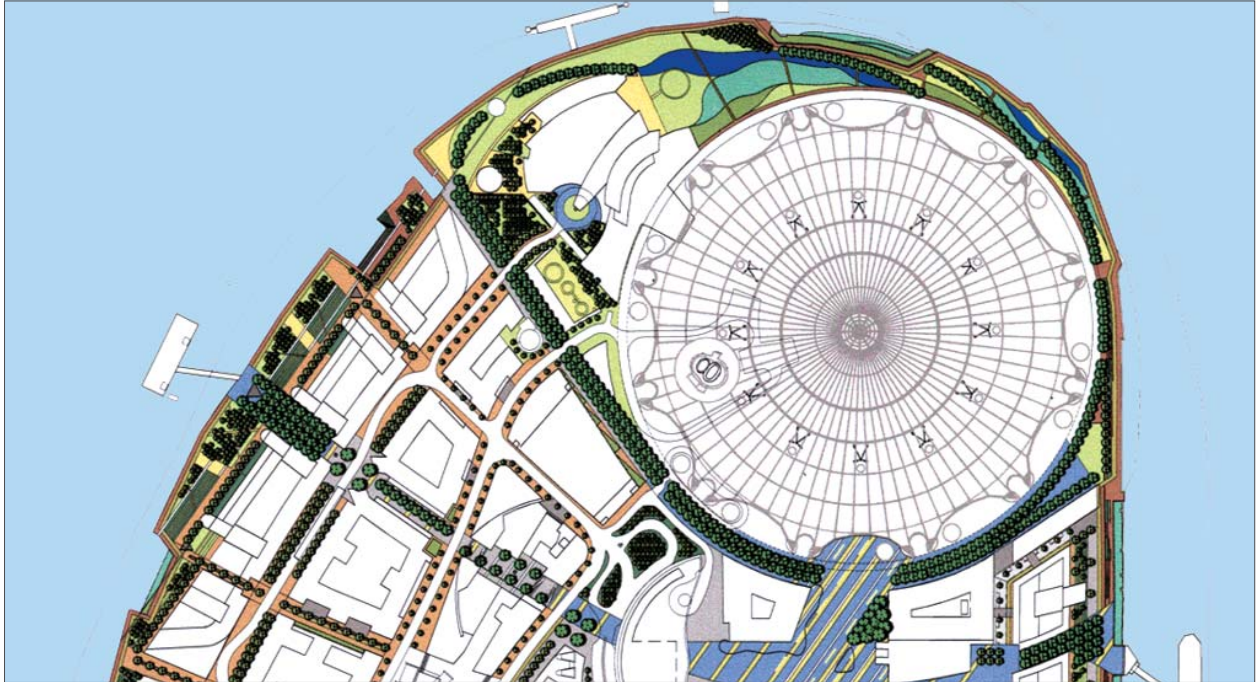


BATTLE McCARTHY ©

Consulting Engineers & Landscape Architects



PROJECT:

Greenwich Peninsula, London

CLIENT:

Meridian Delta Ltd.

ARCHITECTS:

Terry Farrell & Partners

BM SERVICES:

Landscape Architecture

VALUE:

£4 billion

DESIGN BRIEF

To develop a masterplan for a mixed use development including 4 residential districts, an office and retail district, school, health centre, improved transport links, a new entertainment and sporting arena and 5 public parks and 12 public squares.

The masterplan provides acts as the framework for the comprehensive 20 year regeneration of the 190 acre site, beginning with the construction of the first of 10,000 homes on the site in 2006. The development will produce 27,000 jobs and will regenerate the Millenium Dome into a 20,000 seat entertainment and sports venue.

In June 2004 the Planning Minister announced that all contracts and planning discussions were complete, signalling the next phase of the development.

London UK Office
T: +44 (0)20 7440 8282
F: +44 (0)20 7440 8292
E: admin@battlemccarthy.com
www.battlemccarthy.com

2338/05

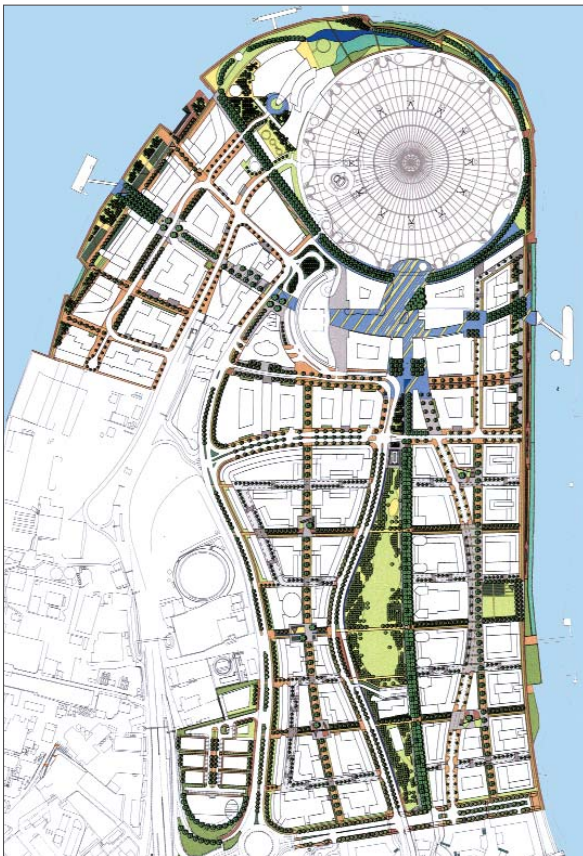
DESIGN INITIATIVES/ACTIONS UNDERTAKEN

The comprehensive development of Greenwich Peninsula provides the unique opportunity to create a series of world class civic spaces and parks set within a structural landscape framework that effectively contributes to the ecological, environmental and townscape legacy of Greenwich and London.

In response, the key landscape objectives were:

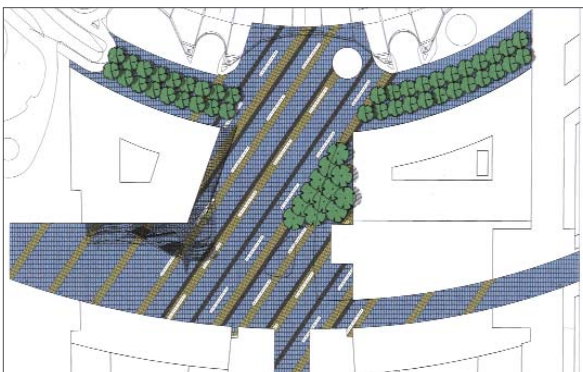
- Capitalise on the site's unique history to create a distinct sense of place.
- Create an external environment that is admired and loved by everyone who experiences it.
- Set a new benchmark for quality along the River Thames frontage.
- Create a network of routes and spaces that provide a variety of experiences and cater for a wide variety of different user groups.
- Create spaces and places that are safe and comfortable to use.
- Use robust contemporary materials and treatments to reflect the significance of the site as a new urban quarter for London.



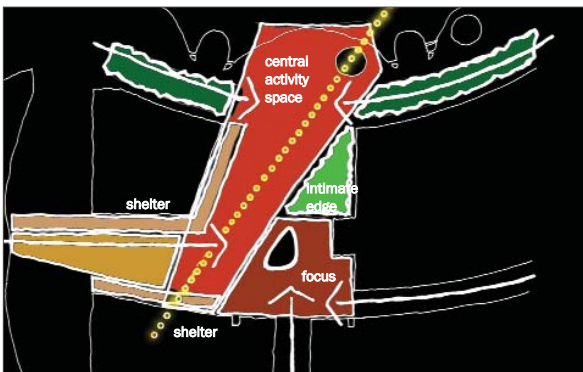


Landscape Masterplan

A landscape masterplan, supporting document and series of landscape plans were developed to illustrate the character, treatment and layout of the various spaces, the quality of materials required and the manner in which materials would be used to create a cohesive landscape framework for the Peninsula.



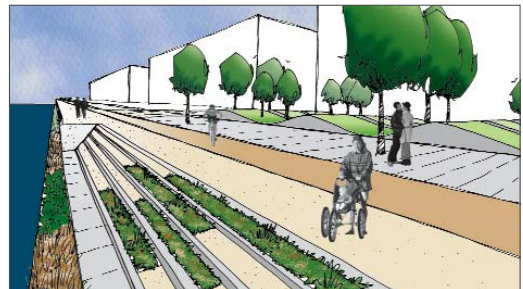
Millennium Square Landscape Masterplan



Millennium Square Concept Diagram



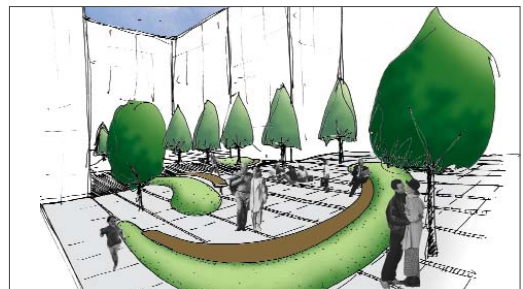
Landscape Synthesis



Visualisation of East Riverside



Visualisation of Meridian Gardens



Visualisation of Residential Courtyard