

PROJECT:
Hull Central Masterplan, Kingston-Upon-Hull

CLIENT:
Hull Citybuild

ARCHITECTS:
Hopkins Architects Ltd. & Chapman Taylor

BM SERVICES:
Landscape Architecture

VALUE:
Classified

DESIGN BRIEF

To develop a landscape strategy that comprehensively addresses the public realm as part of the Strategic Framework for the Renaissance of Hull City Centre. The central area presents a number of challenges due to wartime damage, under investment and highway schemes.

DESIGN INITIATIVES/ACTIONS UNDERTAKEN

Battle McCarthy carried out a review of the existing public realm of Hull City Centre, which provided a way forward for developing a landscape and public realm strategy for the city. The following key elements were considered:

- **Materials**

A palette of hard materials, street furniture and planting would be developed for the city centre. Key materials/elements would be continuous throughout the central area, giving consistency of approach needed to generate a real sense of place. Additional materials will be used highlight the character, or support the function of defined areas.

- **Legibility**

A structure and hierarchy of the streets and spaces would be developed to improve the legibility of the city, and the aesthetic quality and functionality of all city centre streets and spaces.

- **Urban Character**

The city centre was divided into 7 distinct areas, each with a different urban character. Each area was examined in turn, with an overview of current public realm quality, with more specific design guidance produced for hard and soft materials, lighting and street furniture.

- **Sustainability**

Consideration was given to achieving a more sustainable city centre and to longer term management and maintenance issues.

A series of clearly defined walks and cycleways were developed to form a key part of the masterplan, to define the city centre and unify its different elements. The most important of these included:

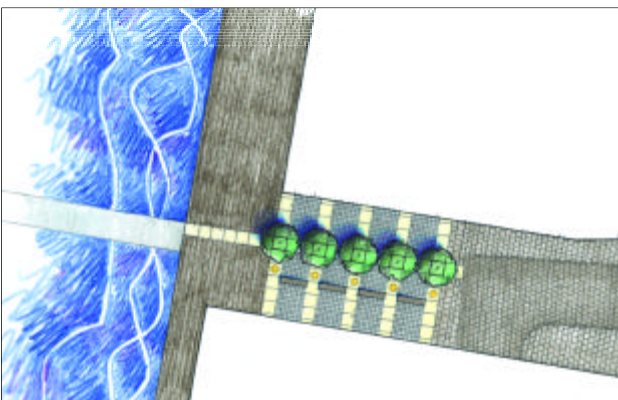
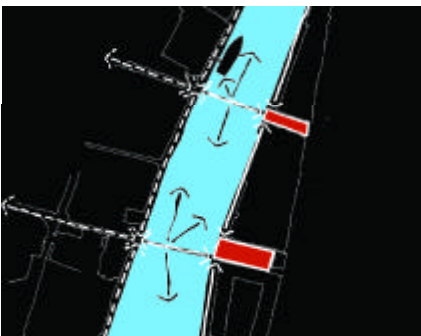
- An outer walk that defines the extent of the city centre core - a green walk that will link all the old and new public spaces.
- An inner Dock Walk which will link the River Hull to the River Humber following the line of the old docks.
- A new east-west walk that will link the new St Stephens scheme at Ferensway to the east Bank of the River Hull as the new "portal" into the Old Town.

A series of new public spaces, linked by the network of walks and animated by the uses surrounding them included:

- Albion Street/Bond Street scheme: a new public square.
- Quay West: a new public plaza.
- Humber Quays: a continuous riverside promenade and a new plaza.
- Fruit Market: a new plaza centred on the restored dry dock with a permanently moored historic ship.
- East Bank: a new pocket park to accept the new feature bridge in this location
- Victoria Square and Queen's Gardens: new landscape treatments.

Pocket Parks: design principles

- Small public spaces.
- Allow for easy movement across the new proposed pedestrian foot bridges.
- Imaginative use of traditional riverside materials.
- Provide sheltered safe outdoor seating places with views over the river.



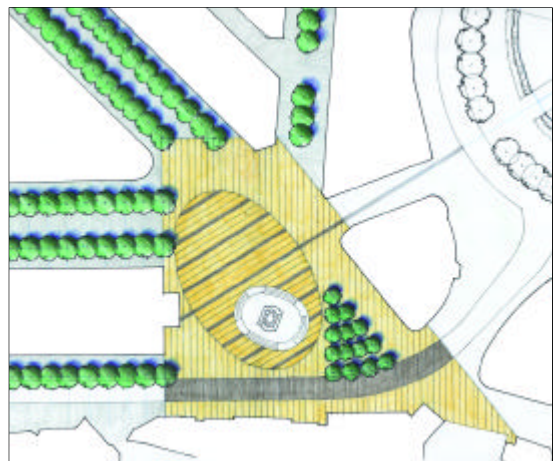
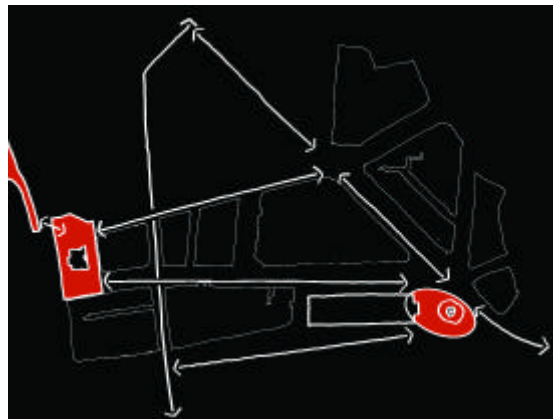
East Bank Pocket Park



Hierarchy of Streets and Spaces

Victoria Square: design principles

- Situated at the heart of the city.
- Reinforce the visual link between Victoria Square and Queen's Gardens.
- Use a higher quality surfacing material e.g. natural yorkstone, to reinforce its importance.
- Divide the groundplane to distinguish between active and passive areas.
- Greater distinction between shared and pedestrian only surfaces.
- New tree planting to define the square and frame views.



Victoria Square