

BATTLE McCARTHY ©

Consulting Engineers & Landscape Architects



PROJECT:

Shell Centre, London

CLIENT:

Shell Oil and Lend Lease

ARCHITECTS:

Eric Kuhne and Associates/Arup Associates

BM SERVICES:

Environmental Impact Assessment,
Landscape Architecture & Environmental Analysis

VALUE:

£100million

DESIGN BRIEF

To co-ordinate the Environmental Impact Assessment and produce the Environmental Statement, provide landscape architectural services, and environmental and microclimate analysis of the building design, for the development of the Shell Centre. The development of the site on the South Bank of the River Thames will provide new office, retail and leisure facilities along with high quality streetscape and public open space.

DESIGN INITIATIVES/ACTIONS UNDERTAKEN

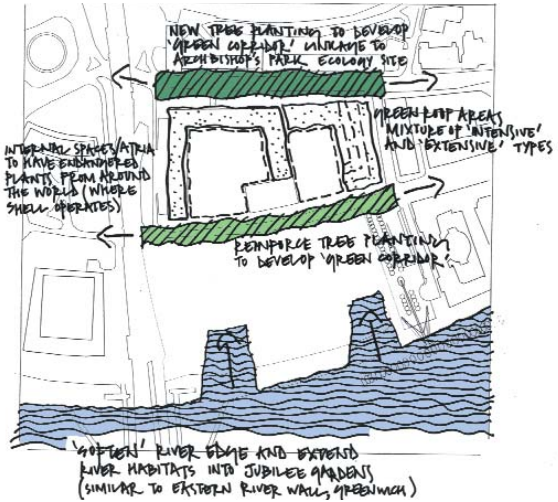
The site is situated within the South Bank Conservation Area and is surrounded by well known landmarks such as the Royal Festival Hall, the Hayward Gallery, the BA London Eye and County Hall. The development was therefore required to respect the sensitive location of the building's setting and address the issues of sustainable development.

Our approach to the co-ordination of the Environmental Impact Assessment for the site was to ensure the integration of sustainable development throughout the process. Sustainable development was, therefore, a key issue in the evolution of the design in order to minimise any adverse environmental impacts and to give appropriate consideration to social and economic issues.

Battle McCarthy had responsibility for the technical assessment of the scheme including sustainability, microclimate, landscape and ecology, water, waste and materials, and energy. An environmental brief was adopted in order to ensure a reduction in the energy use of the buildings. The design was then assessed against energy efficiency standards and achieved a 'very good' environmental rating.



London UK Office
T: +44 (0)20 7440 8282
F: +44 (0)20 7440 8292
E: admin@battlemccarthy.com
www.battlemccarthy.com

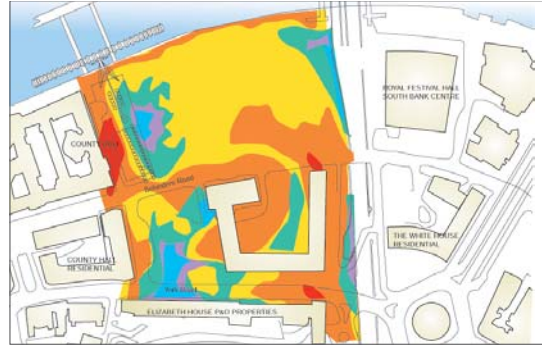


Ecology Concept Diagram

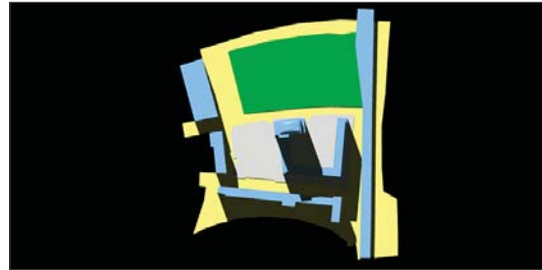


Artist Impression

Environmental Analysis

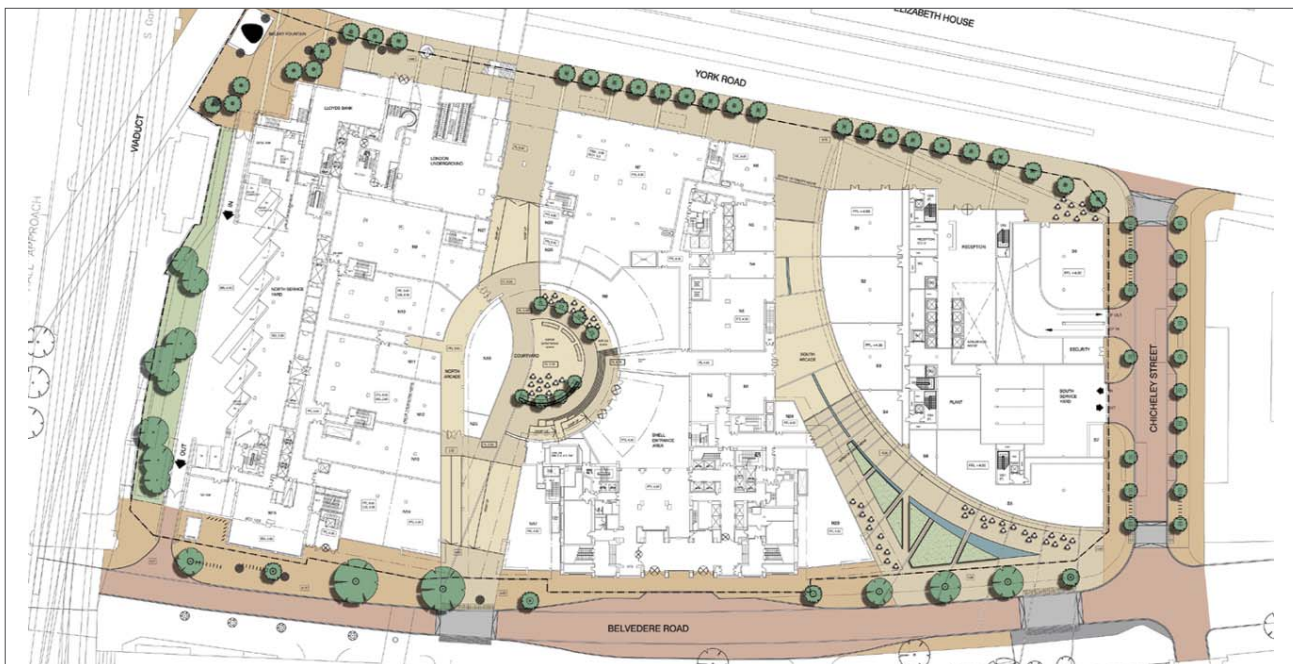


Wind



Solar

An integrated landscape design was developed which responded to microclimate, provided a seamless internal and external environment, maximized reuse of on-site resources and created high quality external spaces. Traditional and contemporary hard materials were combined with semi-mature tree planting in the central courtyard and streetscapes, to create a strong civic character and a clear identity for the site.



Landscape Masterplan



Elevation of York Road