



## PROJECT:

Glasgow Harbour, Glasgow

## CLIENT:

Glasgow Harbour Limited (a joint venture company formed by Clydeport Plc. and the Bank of Scotland)

## ARCHITECTS:

Kohn Pedersen Fox Associates

## BM SERVICES:

Landscape Architecture

## VALUE:

£121million

## DESIGN BRIEF

To develop the landscape masterplan for a mixed use development on approximately 42 hectares of land on the north side of the River Clyde in Glasgow. The development includes a range of commercial and residential uses intended to improve the image of Glasgow and provide new job opportunities and homes.

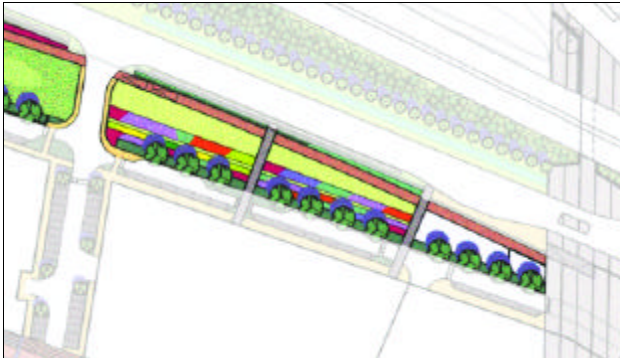
## DESIGN INITIATIVES/ACTIONS UNDERTAKEN

Glasgow Harbour is located along a 2 km stretch of the River Clyde in the West End of Glasgow. The site is currently severed from adjacent communities by an abandoned railway line and the Clydeside Expressway and as such, represents a fairly hostile pedestrian environment. Proposals to redevelop the site included the provision of new residential and commercial development, a linear park punctuated by new public squares, a revitalised river edge incorporating pedestrian and cycle routes and an ecology park at the mouth of the River Kelvin.

Central to the masterplan design philosophy was the integration of sustainable design principles. These included:

- Improving pedestrian and cycle connectivity between the site and Partick transport interchange and between the existing communities and the proposed development.
- The creation of a new park, urban plazas and a riverside walk.
- The development of a robust ecological design for the Clydeside Expressway, designated as a 'Corridor of Wildlife and Landscape Importance'.
- No net loss of habitat value, with the aim of incorporating a diverse range of habitats throughout the site based on the Glasgow Biodiversity Action Plan (BAP).
- The re-modelling of the east and west banks of the River Kelvin to create a wetland park and riverside terraces suited to Glasgow BAP priority species.
- Reconditioning and reuse of excavated materials within the confines of the site with the aim of minimising the export and import of materials.
- Incorporation of sustainable urban drainage features within the landscape design.
- The use of built form and landscape elements to locally enhance the microclimate within key public spaces such as the linear park and plazas.

### Linear Park



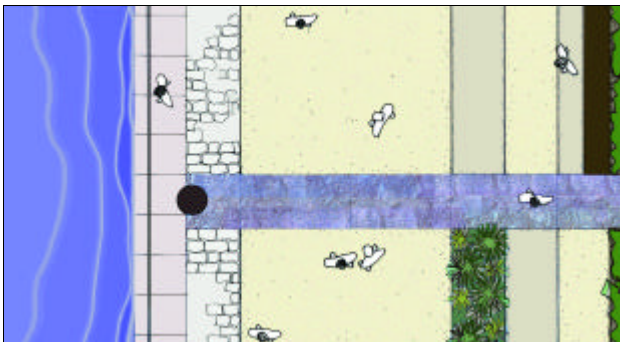
Plan

The Linear Park forms the backbone of the entire development and is designed to provide both visual amenity and recreation opportunities in an ecological setting. A series of high quality interconnecting spaces provide a visually stimulating environment whilst reinforcing the unique identity and linearity of the harbour.

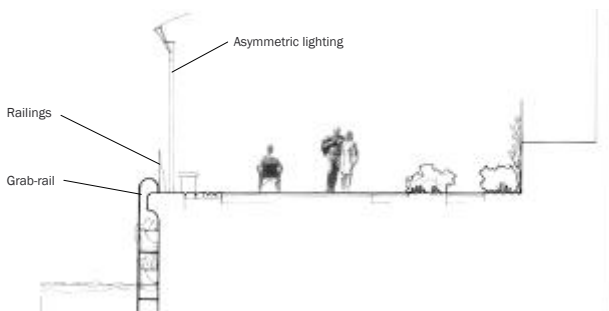


Section

### Riverside Walk



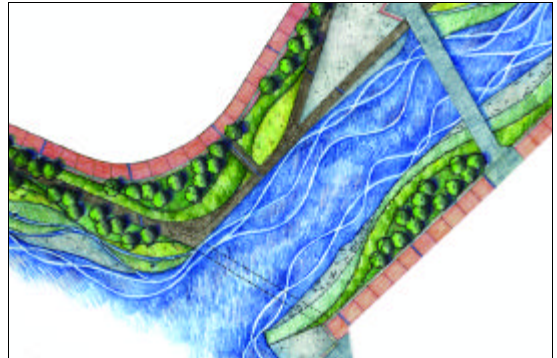
Typical Plan



Typical Section

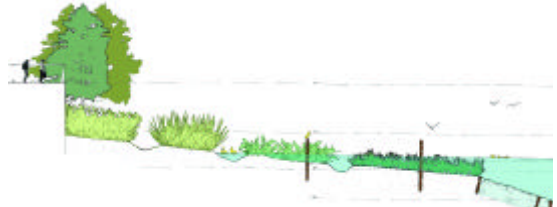
The Riverside Walk provides a safe and logical routeway for pedestrians and cyclists along the river edge. Existing quayside features are retained including edge copings and capstans, whilst high quality hard materials and planting in a modular format bring a sense of order and continuity to the walk. External lighting is used sensitively and imaginatively to reduce light pollution, provide a safe route and add drama.

### Clyde and Kelvin River Park



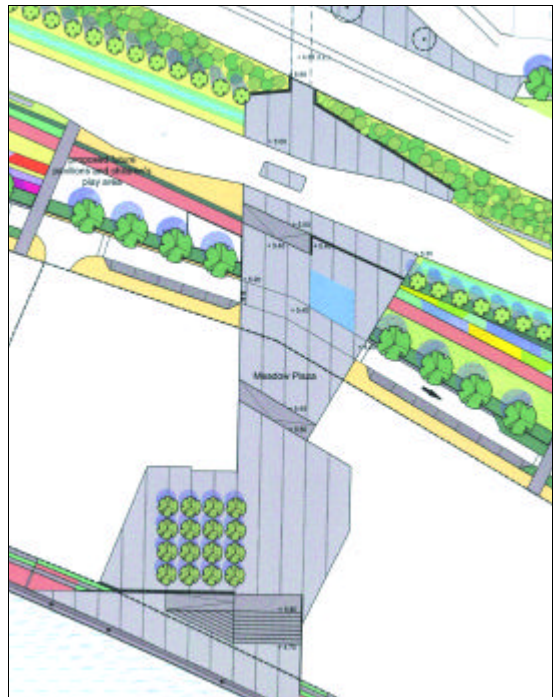
Plan

A wetland park that reflects the historical 'inches' of the Clyde. The Riverside Walk is maintained whilst decked walkways allow a stronger relationship with the waters edge. Terraced banks allow riparian habitats to develop in response to the Biodiversity Action Plan.



Section

### Meadow Square



Plan

Meadow Square provides a civic space which will become a focus for activity and creates a distinctive gateway into the site. The square also establishes physical and visual links from the existing urban fabric through to the River Clyde and creates a logical sequence of spaces which improve the safety and quality of access to the Riverside Walk from the West End.