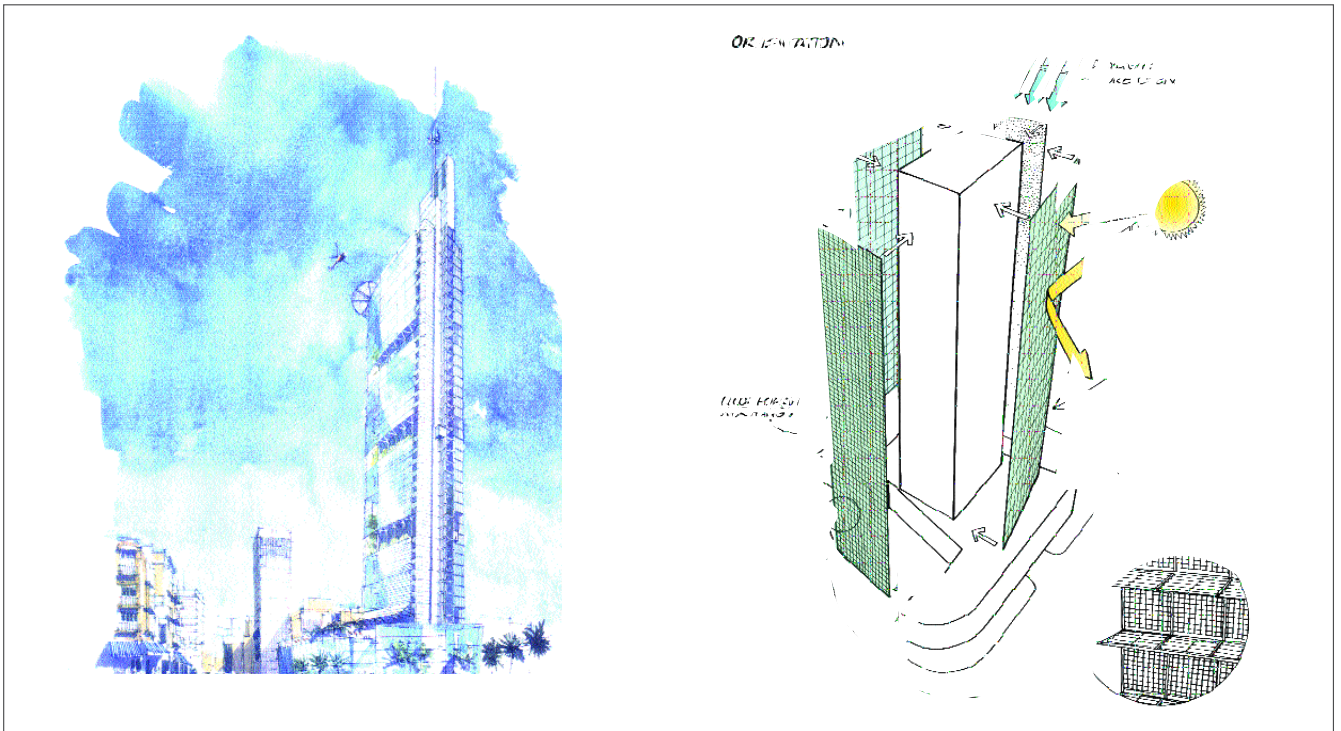


BATTLE McCARTHY ©

Consulting Engineers & Landscape Architects



PROJECT:
Murr Tower, Beirut, Lebanon

CLIENT:
Murr Development

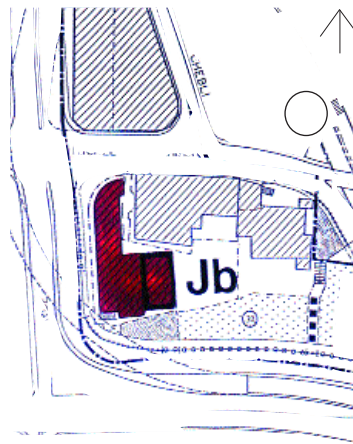
ARCHITECTS:
Sheppard Robson

BM SERVICES:
Environmental Services

VALUE:
£30million

DESIGN BRIEF

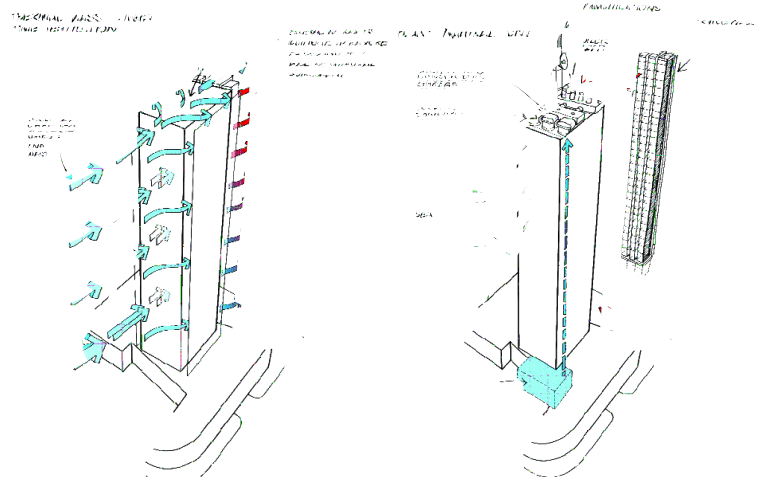
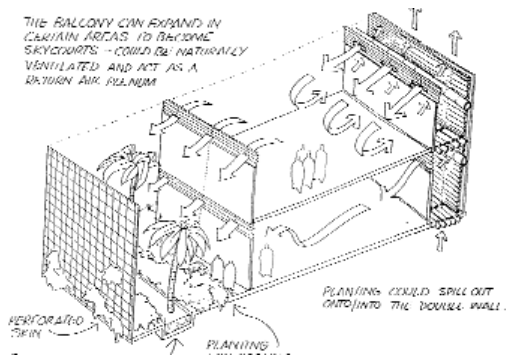
To design a climate responsive 40 storey high rise tower using the facades to filter light and ventilation and mixed mode systems to utilise cool sea breezes to control solar gain.



Site Plan



Murr Tower in the centre of Beirut



London UK Office
T: +44 (0)20 7440 8282
F: +44 (0)20 7440 8292
E: admin@battlemccarthy.com
www.battlemccarthy.com