

# BATTLE McCARTHY ©

Consulting Engineers & Landscape Architects



## PROJECT:

Haute Vallée School

## CLIENT:

State of Jersey Education Department

## ARCHITECTS:

Architecture PLB

## BM SERVICES:

Structural, Environmental & Building Services Design

## VALUE:

£12.5million (approx)

## DESIGN BRIEF

The award winning low energy secondary school includes the design of classrooms, science block, large sports hall and theatre. The School in Jersey was designed to maximise efficiency in massing, orientation, structure and envelope in order to maintain high levels of environmental quality. The scheme uses natural cross ventilation extensively.

London UK Office  
T: +44 (0)20 7440 8282  
F: +44 (0)20 7440 8292  
E: admin@battlemccarthy.com  
www.battlemccarthy.com

0002/PC

## DESIGN INITIATIVES/ACTIONS UNDERTAKEN

The States of Jersey commissioned this new comprehensive school following an open design competition. The school not only accommodates 750 secondary pupils but also community facilities such as a bar and function suite, theatre and swimming pool.

The design has sought to bring together a number of known, low-energy technologies into a simple and yet innovative configuration. All building components are robust, standard products and are relatively low-tech.

The scheme combines the benefits of wind towers, thermal mass, passive solar heating, external shading and good daylighting, all within a well balanced ecological landscape

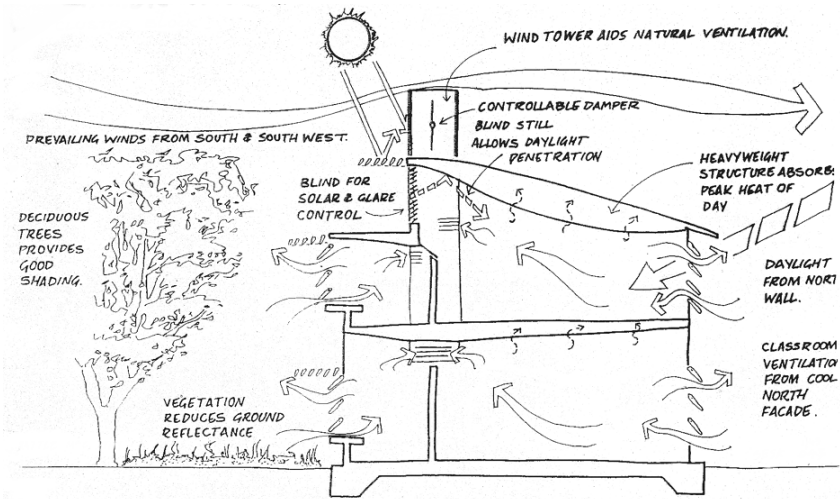
The buildings' performance places it in the top one per cent of energy efficient schools in the UK at 80kwh/m<sup>2</sup> per annum. It achieves over 95 per cent day lighting and 90 per cent reduction in lighting energy consumption. Heating requirements are reduced by 68 per cent due to passive solar heating and internal gains and between a 40-50 per cent reduction in heating plant costs. Overall, this achieves a total energy consumption reduction of over 75 per cent.



## AWARDS

RIBA Award  
Civic Trust Award (commended)

2000  
2001



Summer Daytime Operation

