

# BATTLE McCARTHY®

Consulting Engineers & Landscape Architects



## PROJECT:

National Institutes of Health, Maryland, USA

## CLIENT:

Department of Health and Human Services

## ARCHITECTS:

RTKL

## BM SERVICES:

Sustainable Masterplanning, Environmental Analysis,  
Building Services (MEP) Engineering  
& Landscape Architecture

## VALUE:

\$1.5 million

## DESIGN BRIEF

To develop a sustainable campus masterplan and sustainable building guidelines for the National Institutes of Health (NIH) medical campus in Bethesda, Maryland. NIH is a world leader in medical and clinical research, so the approach focused on integrating environmental, economic and health and wellness concerns for a whole range of subject areas.

## DESIGN INITIATIVES/ACTIONS UNDERTAKEN

Battle McCarthy was appointed to develop a sustainable design strategy for the overall site and buildings on campus. Opportunities explored included:

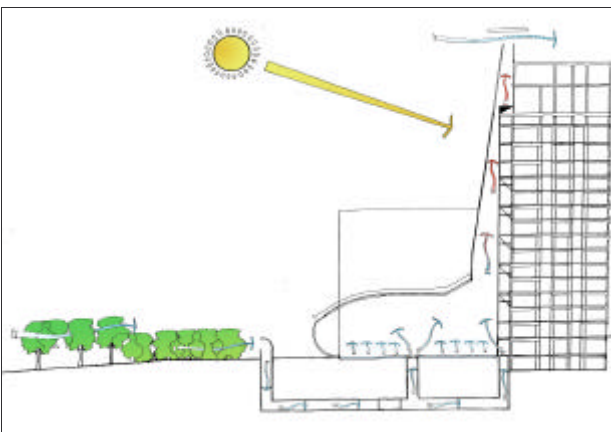
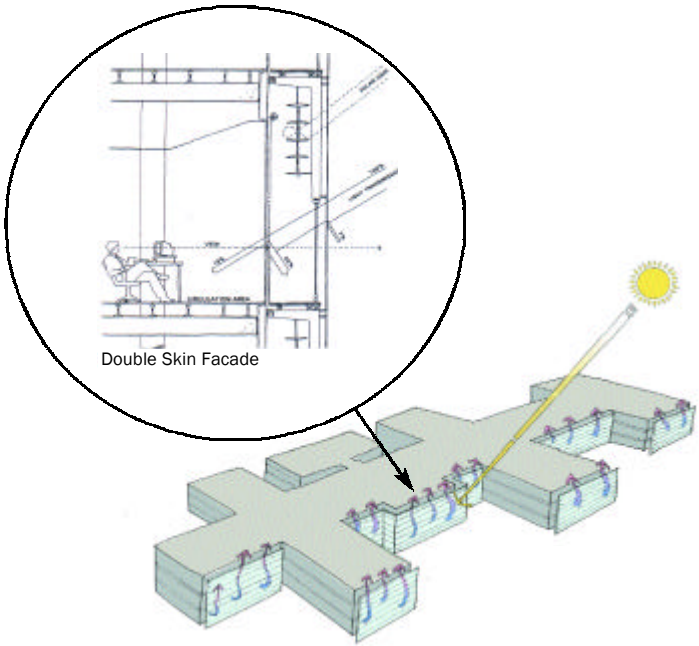
- Integrated landscape masterplan.
- Ecological restoration of the campus.
- Water conservation and reclamation.
- Improved campus-wide human comfort.
- Energy efficiency for buildings.
- Renewable energy production on campus.
- Sustainable transport options.
- Waste and recycling.
- Life-cycle costing.

During this process, the need for a tailor made sustainable auditing mechanism (SAM) was identified, that combined the benefits of LEED (USA), BREEAM (UK) and specific NIH needs (Health).

London UK Office  
T: +44 (0)20 7440 8282  
F: +44 (0)20 7440 8292  
E: admin@battlemccarthy.com  
www.battlemccarthy.com

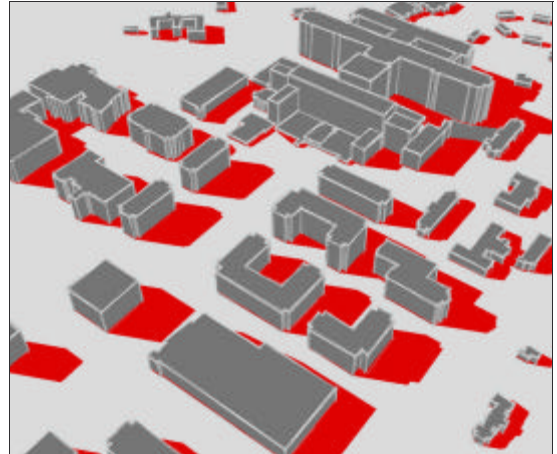


Topography

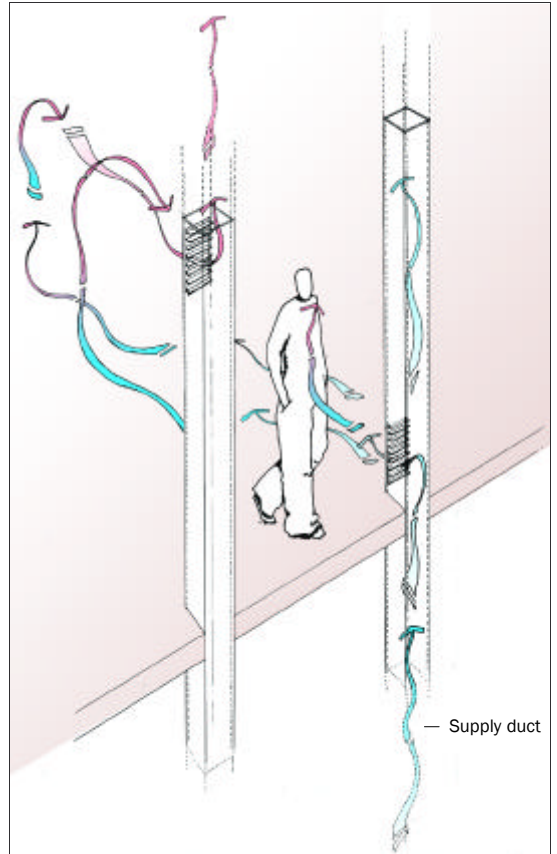
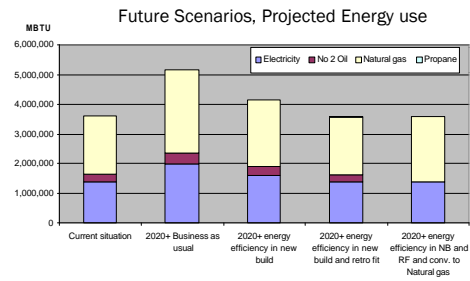


Environmental Section

Solar



- Frequent bright sky conditions.
- Solar access to open space.
- Possibilities for passive solar heating in winter.



"Warm Shell" - i.e. services distribution for offices within the skin of the building - avoids cross contamination with labs etc.  
 - could have separately controlled supply temperatures linked to natural ventilation system.