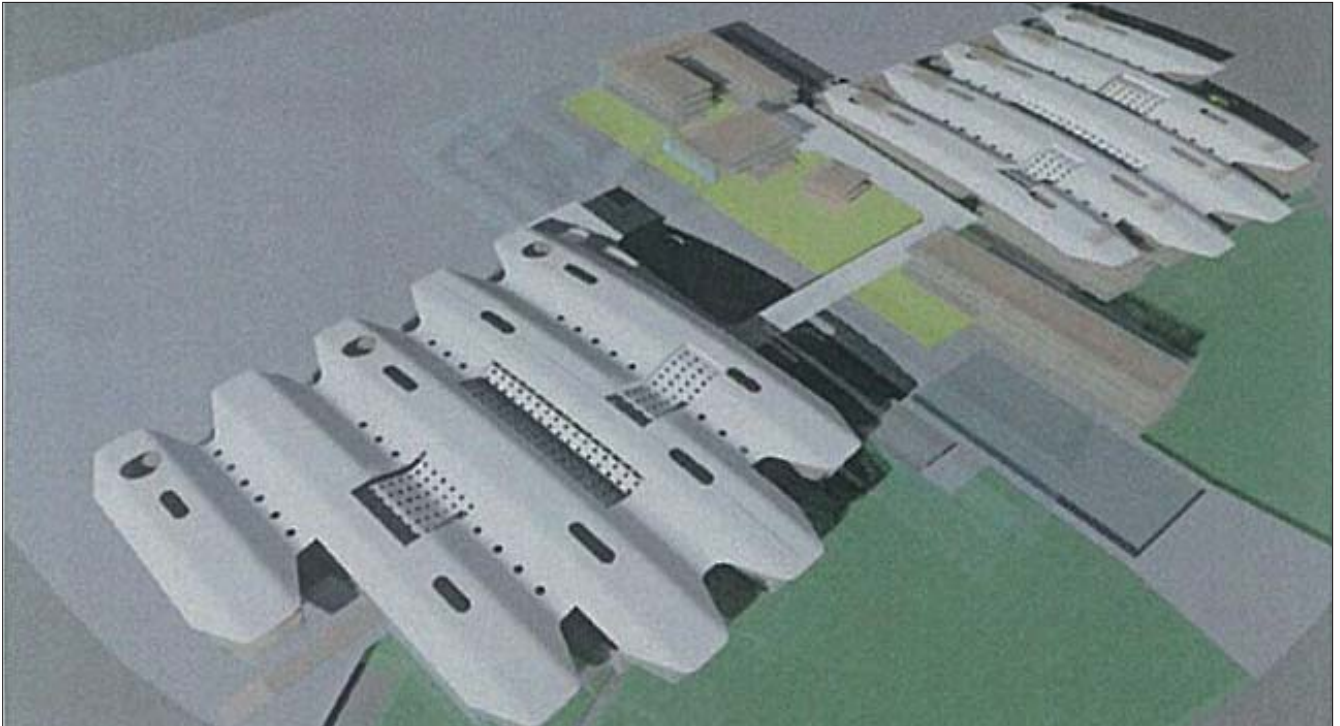


BATTLE McCARTHY ©

Consulting Engineers & Landscape Architects



PROJECT:

King Abdullah University of Science and Technology

CLIENT:

King Abdullah University of Science and Technology

ARCHITECTS:

HOK

BM SERVICES:

Sustainability Consultants

CONTRACT DATES:

2007 - 2008

VALUE:

\$5bn

DESIGN BRIEF

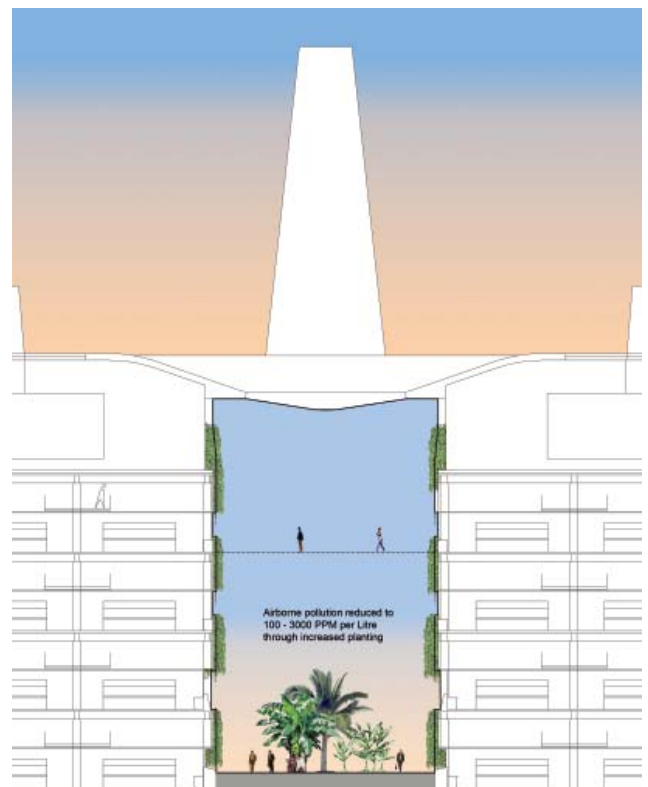
Battle McCarthy were the sustainability consultants responsible for the environmental sustainability strategy covering ecology, landscape design, climate massing, renewable energies, water, waste and air quality

The proposed KAUST campus located near the Old Qadima Port of the Old Jeddah-Yanbu highway shall extend along the Red Sea shoreline and significant segments of the campus will be constructed as a "man made" island on top of an existing shallow coral reef.

London UK Office
T: +44 (0)20 7440 8282
F: +44 (0)20 7440 8292
E: admin@battlemccarthy.com
www.battlemccarthy.com

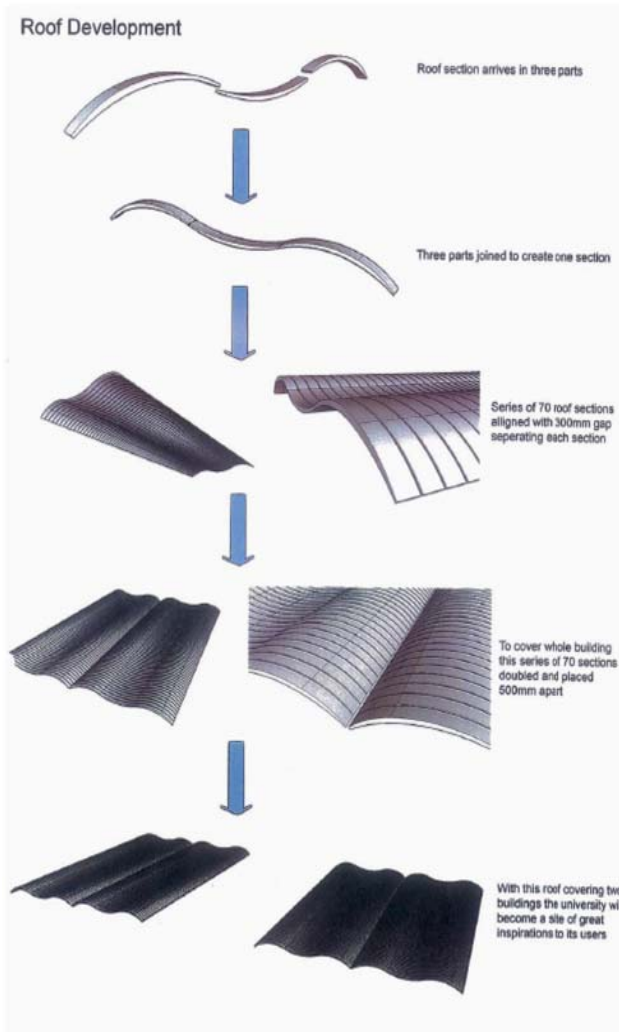
Battle McCarthy's involvement in the development of KAUST allowed the integration of a range of sustainable systems in the project, mainly with the aim of minimising the use of natural resources. This included use of seawater for flushing toilets and grey water recycling for the use in irrigation in nearby landscaped areas such as the golf course.

Thermal mass concepts were adopted from day one for regulating



the internal thermal environmental. The proposed landscape was also utilised and integrated into the design to carry out a number of functions : providing 'coolth' & shade, providing a healthy green enjoyable space and also dispersing dust and air pollutants to improve the local air quality.

BM originally developed with HOK the concept of a highly insulated roof over the development. Furthermore BM/HOK incorporated wind towers to enhance the air movement beneath the roof as well as providing evaporative cooling with seawater and seawater planting.



- 1) Seawater drawn into development for use in the university toilets.
- 2) Black water treated in the water treatment works
- 3) Clean water allowed to run through wadi
- 4) Water transported to existing golf course
- 5) This water is then used to irrigate desired areas of the golf course
- 6) Majority of water is lost through evaporation

