

# BATTLE McCARTHY ©

Consulting Engineers & Landscape Architects



## PROJECT:

Ontario College of Art & Design, Toronto

## CLIENT:

Ontario College of Art & Design

## ARCHITECTS:

Alsop & Stormer

## BM SERVICES:

Mechanical, Electrical & Environmental Services

## VALUE:

£18million (approx)

## DESIGN BRIEF

To design a major expansion of the college complex with the upgrading of existing facilities and the addition of a new building. The college's central objective is education through communication, and daylight will play a vital role in ensuring the success of the college by creating stimulating and appropriate visual environment.

The design had to meet with the college's three basic aims;

- The building must be economically successful providing BEST VALUE
- The development must benefit both students and local residents
- The development should meet the highest standards in sustainable design to minimise its environmental impact

London UK Office  
T: +44 (0)20 7440 8282  
F: +44 (0)20 7440 8292  
E: admin@battlemccarthy.com  
www.battlemccarthy.com

## DESIGN INITIATIVES/ACTIONS UNDERTAKEN

The existing college facilities, at 100 McCaul Street, were enhanced and an additional structure built, to house the Sharp Centre for Design. The expansion now offers an additional 90,000 sq ft in which the college will develop;

- a home for all professional design programs
- an enhanced learning environment with state-of-the-art facilities
- a centre fostering breakthrough R&D for commercial applications
- a major expansion and upgrade of existing facilities for art, foundation studies and liberal studies.

The Sharp Centre is the most striking structure in the expansion program. It is suspended 9 storeys above the old building on McCaul Street. The 2 storey box is supported on tenuous steel columns and linked to the ground by a bright red connecting stairway. The existing building at street level has been not only renewed but now also acts as a striking entrance foyer to the floating structure above.

Lighting is very important in stimulating the senses and maintaining a lively setting for learning and creativity. A qualitative lighting strategy accentuates the architectural form and enhances the ambient space while a quantitative strategy ensures all lighting standards are met. This was achieved with a minimum reliance on artificial light, using daylight as far as possible to satisfy the requirements, and thus reducing energy use significantly.

The architectural massing of the box promotes a shallow building, to place most occupants in close proximity to an exterior wall. This results in a building where energy use and are comfort are dominated by envelope performance.

The facilities were opened in June 2004 to critical and public acclaim.

## AWARDS

RIBA Worldwide Award

2004



Main entrance at street level



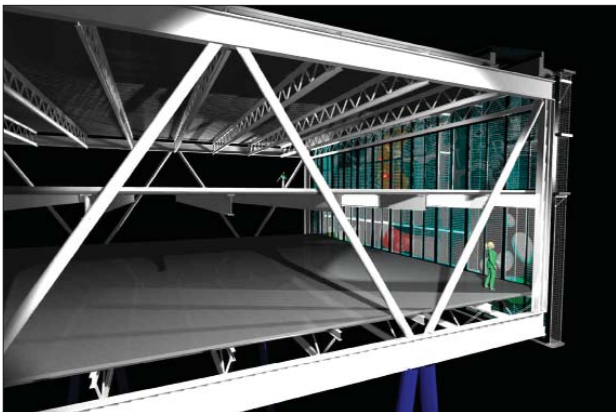
Interior views of gallery spaces



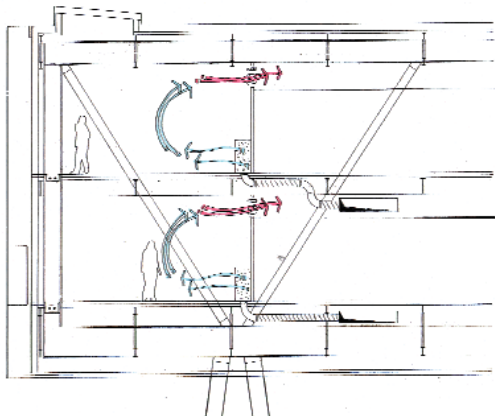
Interior view of entrance foyer



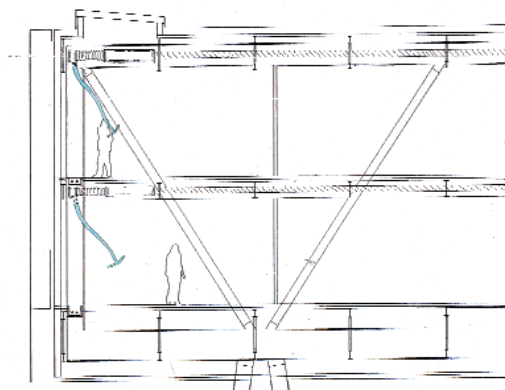
Interior view of brightly coloured window sills



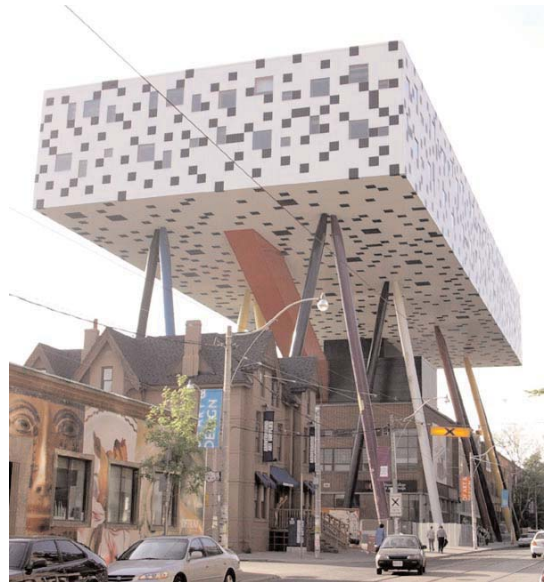
Section showing internal spaces



Displacement Ventilation



Variable Volume Constant Air Temperature



The expansion offers a renewed physical presence at the heart of Toronto's vibrant art and design community, and the improved facilities will provide graduates with the skills needed to feed Ontario's \$10 billion culture and communications industries. The local community will also benefit from increased public participation through exhibits, conferences and partnership opportunities with local industries and the professional community.

The expansion provides an additional 90,000sq ft of space to house:

- new classrooms, studios and labs
- designated work space for upper-year students
- student spaces, gathering places and exhibition areas
- facilities for new technology and additional programming
- faculty office space
- three new multimedia lecture theatres with seating for 400, 175 and 125