

BATTLE McCARTHY ©

Consulting Engineers & Landscape Architects



PROJECT:

Gresham School Theatre, Norfolk

CLIENT:

Gresham School

ARCHITECTS:

Renton Howard Wood Levine

BM SERVICES:

Structural & Services Design

VALUE:

£0.8million (Approx)

DESIGN BRIEF

Structural design and construction of a new 300 seat theatre

DESIGN INITIATIVES/ACTIONS UNDERTAKEN

The primary engineering design objectives for the theatre have been to maximise the use of materials, systems and energy for the benefit of Gresham's school.

The engineering strategy has been to use structural materials to moderate climatic extremes and thus reduce servicing capital and running cost.

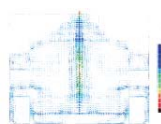
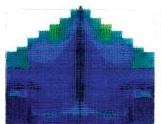
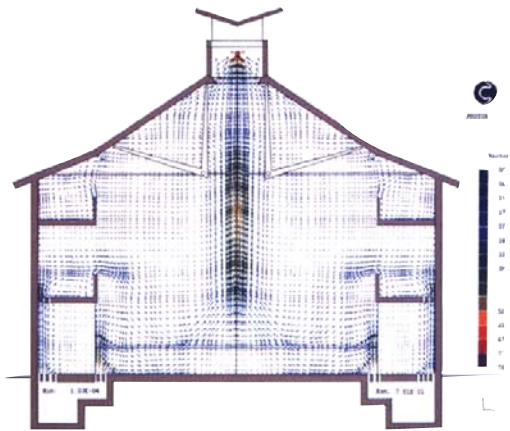
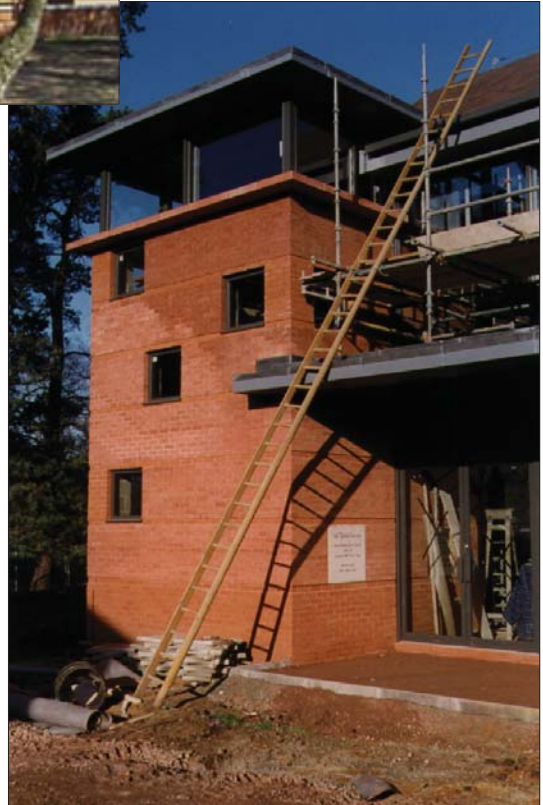
The building consists of a steel tension tied roof structure supported by external load-bearing masonry walls, with steel framed internal gallery floors.

Fresh air is drawn beneath the building and out through wind towers positioned at roof level. During the winter, the fresh air is pre-heated before entering the theatre; in summer it is pre-cooled by the sub-structure.

London UK Office
T: +44 (0)20 7440 8282
F: +44 (0)20 7440 8292
E: admin@battlemccarthy.com
www.battlemccarthy.com



Exterior



CFD



Site Construction Photo's