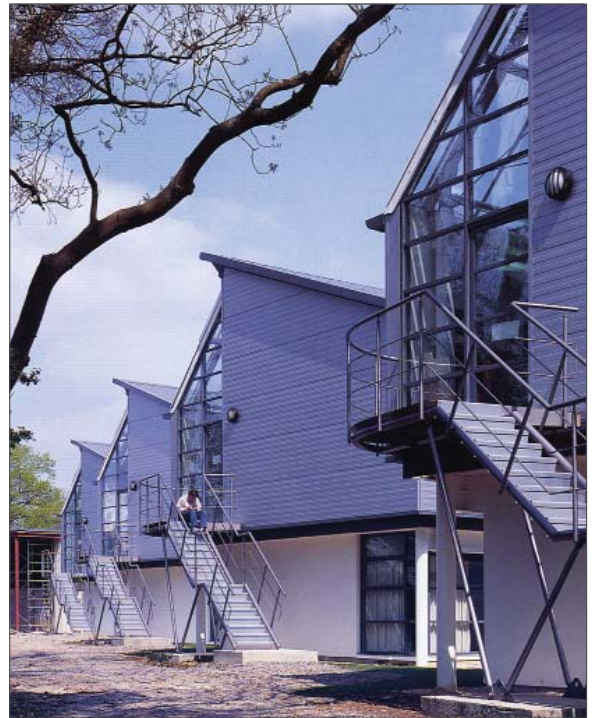


BATTLE McCARTHY ©

Consulting Engineers & Landscape Architects



PROJECT:

Winchester College of Art

CLIENT:

Hampshire County Council

ARCHITECTS:

Plincke Leaman Browning

BM SERVICES:

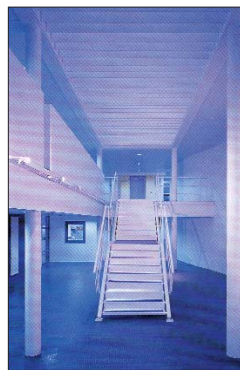
Building Services Engineering

VALUE:

£2.1million

DESIGN BRIEF

To design a low energy art school including climate controlled library and book store.



London UK Office
T: +44 (0)20 7440 8282
F: +44 (0)20 7440 8292
E: admin@battlemccarthy.com
www.battlemccarthy.com

DESIGN INITIATIVE/ACTIONS TAKEN

Battle McCarthy worked with Architecture PLB on this important extension to facilities at the Winchester College of Art. Architecture PLB had been involved with the entire phased development since 1990.

Phase 1 Sculpture Building

- sculpture studios and workshops
- low cost design, fast-track construction

Phase 2 West Side

- offices, seminar and tutorial rooms
- learning resources centre
- 160 seat lecture theatre
- design studios

Phase 3 Student Union

- student centre with bar and lounges

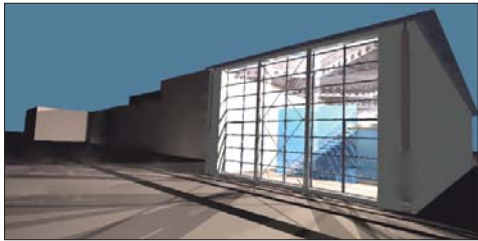
Phase 4 East Side

- central administration and reception
- design studios and digital media centre

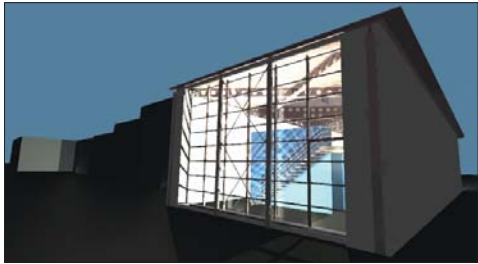
The project was completed in 1999 to critical acclaim, with a number of elements to the development winning awards.

AWARDS

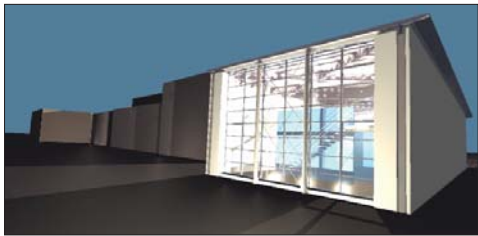
RIBA award 1997
RIBA award 2000
Winchester Preservation Trust Design Awards 1997



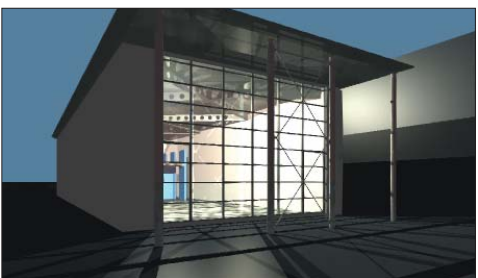
Ceiling-mounted luminaires



Internal floor-mounted uplighters



External pavement uplighters

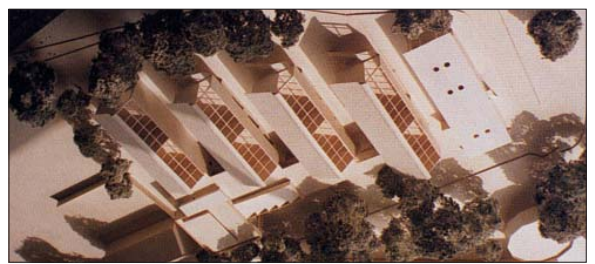


Lighting effect at rear

CAD MODELS DEMONSTRATING THE FOLLOWING ILLUMINATION LEVELS:



Internal views



Model