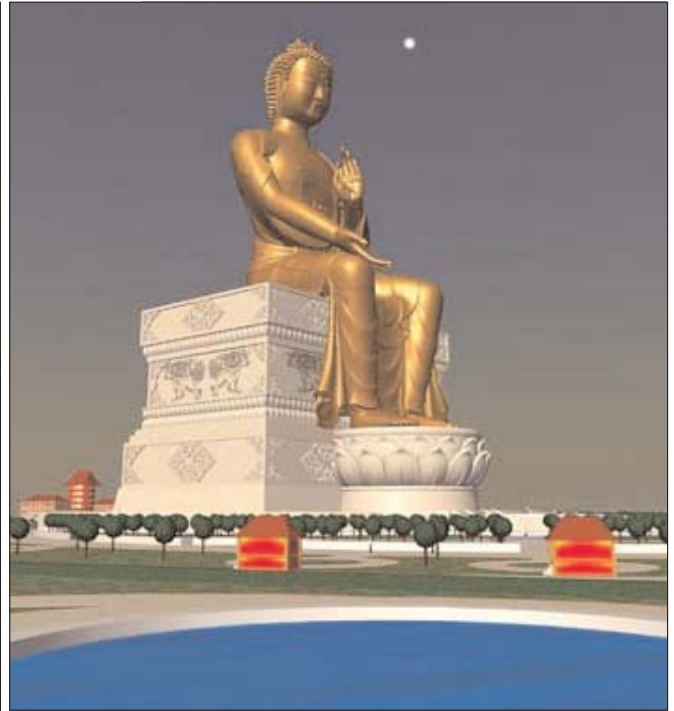


BATTLE McCARTHY©

Consulting Engineers & Landscape Architects



PROJECT:

Maitreya Buddha

CLIENT:

Maitreya Project

ARCHITECTS:

William Mackay Lewis

BM SERVICES:

Structural and Building Services engineering and Landscape Design

VALUE:

Classified

DESIGN BRIEF

To design an enduring monument to spiritual values and to the attainment of peace. The statue is intended to stand for 1000 years and will not only act as a symbol of Maitreya but will also house the projects spiritual and social work long into the future. A 17 storey temple building will be housed within the statue.

Maitreya means 'loving-kindness' and the project aims to effect peace in society through the practice of loving-kindness: peace within the family, the community and the world, as well as inner peace for the individual. The Buddha is universally recognised as a symbol of peace.

"Construction of the statue is not the goal - it is the method for achieving the goal. The goal is to benefit as many people as possible for as long as possible."

Lama Zopa Rinpoche, Spiritual Director of Maitreya Project

London UK Office
T: +44 (0)20 7440 8282
F: +44 (0)20 7440 8292
E: admin@battlemccarthy.com
www.battlemccarthy.com

DESIGN INITIATIVES/ACTIONS UNDERTAKEN

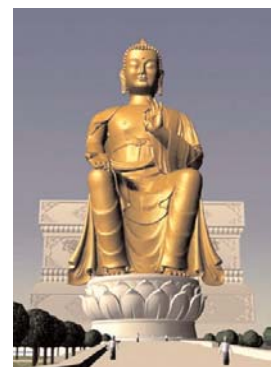
Maitreya Project began construction in the summer of 2004 of this 500ft / 150m bronze statue in Kushinagar, Uttar Pradesh in northern India (the town where Buddha died 25 centuries ago). It's vast scale is intended as a monumental symbol of spiritualism and the rejection of the precedent for high-rise symbols of commercialism and material wealth.

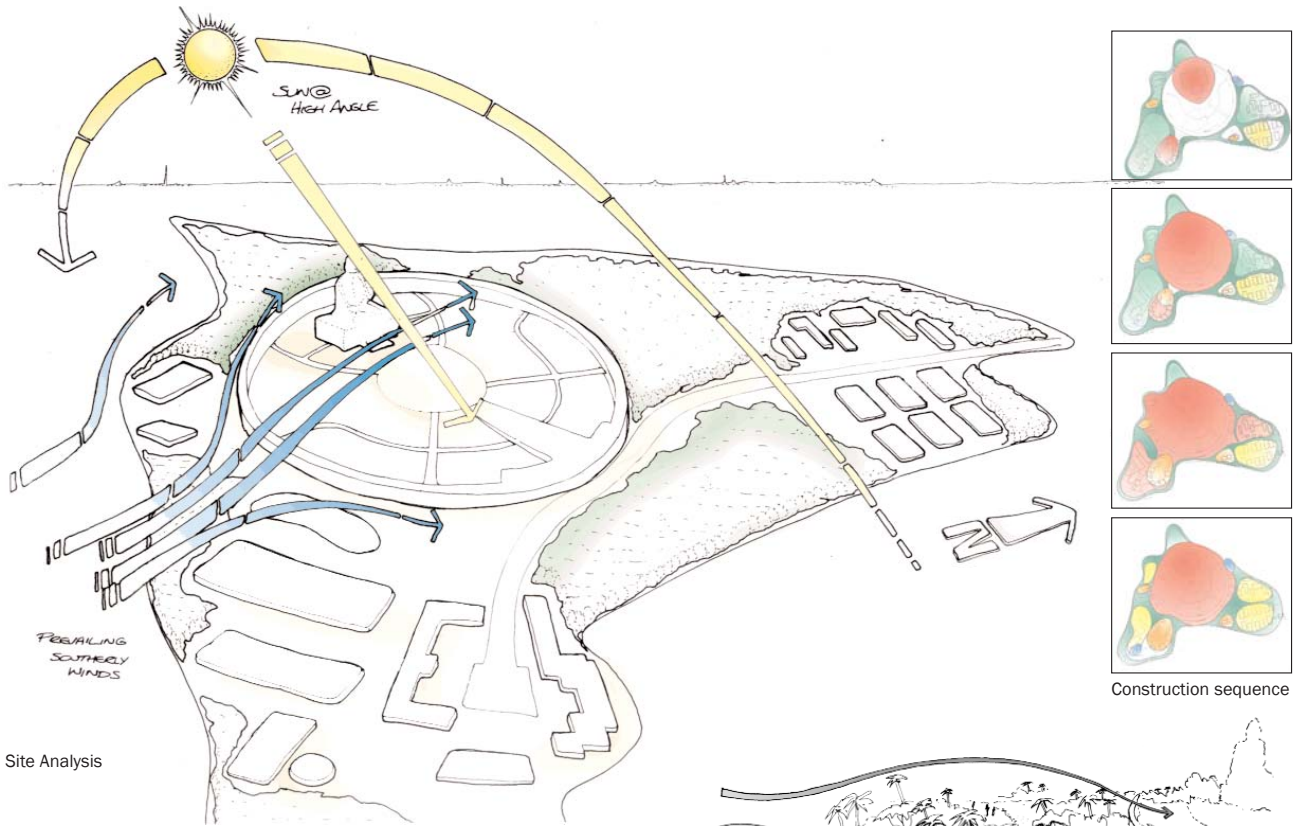
The Maitreya Buddha statue and its throne-building, set in a large landscaped park with meditation pavilions and water fountains, provides the public with temples, exhibition halls, a museum, library, audio-visual theatre and hospitality services.

Through this development the Maitreya Project will continue its valuable work and also create, both directly and indirectly, circumstances for ongoing economic stability for the region.

A full environmental impact assessment was made including; water harvesting, water recycling and management, waste management, and pollution control. Assessment will continue through construction and in operation. Environmental sensitivities and any other environmental concerns have been identified and will inform the projects' implementation and ongoing management strategies.

Standing at 150m the Buddha will be the largest statue in the world, dwarfing the Statue of Liberty at 46.5m. The Uttar Pradesh Government confirmed construction plans in July 2004.





Site Analysis

The Maitreya development has been designed to protect and enhance the environment, meet social needs, and promote economic success. This sustainable society has been attained in a number of practical ways;

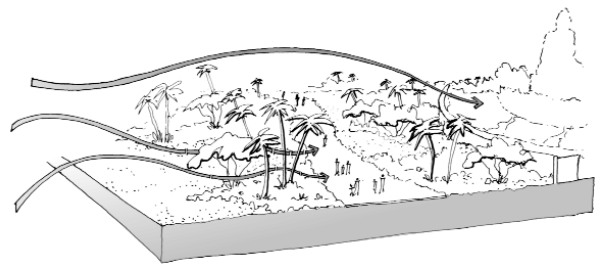
- Ensuring efficient use of water, energy & natural resources
- Minimising waste, with re-use, recycling, composting or energy recovery and sustainably disposal
- Limiting waste to levels that do not damage natural systems.
- Protecting and promote health and amenity through safe, clean, pleasant environments.
- Utilising locally available resources wherever possible.
- Maximising local access to training and skills development.
- Considering impacts of decisions on the community.
- Promoting a vibrant local economy that gives access to sustainable employment without negative environment impacts

In accordance with Maitreya Projects' fundamental principle of sustainability, an engineering approach was adopted using highly tested and proven solutions in harmony with the local climate and environment.

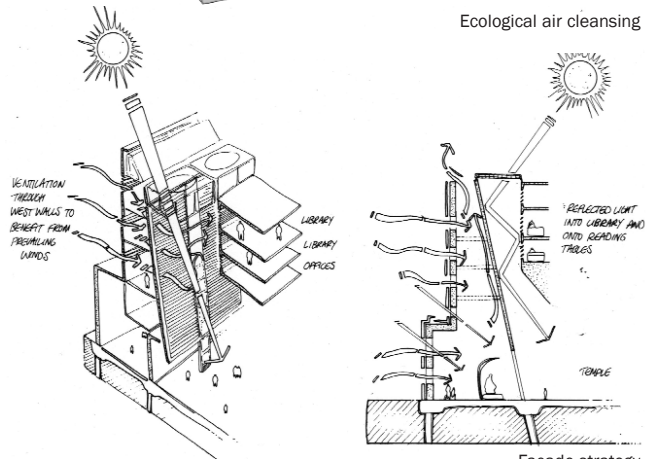
While the conditions the statue will meet today can be easily measured, projecting data for climatic and geological patterns over the 1,000-year lifespan of the statue is much more difficult. The huge structure has been designed to withstand the high winds, extreme temperature changes, seasonal rains, possible earthquakes and floods, and environmental pollution that may occur throughout at least 1,000 years.

Extensive computer modelling was undertaken to predict and study all possible environmental effects on the structure to help understand these problems. As a result extensive research has gone into developing the special alloy of bronze to be used for the outer 'skin' of the statue.

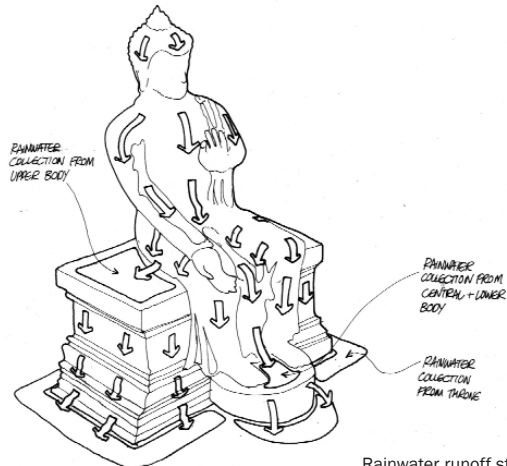
As the bronze 'skin' will expand and contract dramatically due to daily temperature changes, the statue requires special expansion joints. While these are invisible to the observer, they are also constructed in such a way as to protect the internal supports of the statue from water leakage, erosion and corrosion.



Ecological air cleansing



Facade strategy



Rainwater runoff strategy