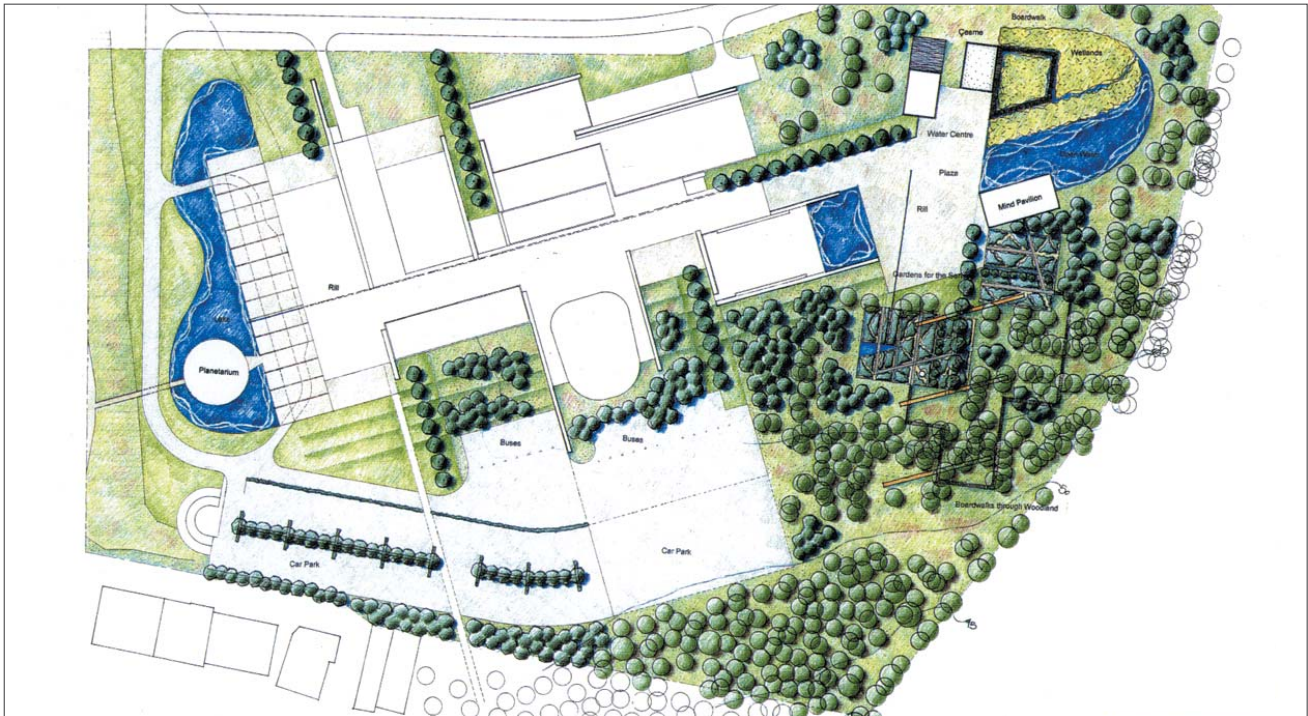


BATTLE McCARTHY ©

Consulting Engineers & Landscape Architects



PROJECT:

Istanbul Science Centre, Turkey

CLIENT:

Yapi Merkezi

ARCHITECTS:

Wilkinson Eyre Architects

BM SERVICES:

Multi-disciplinary Engineering
& Landscape Architecture

VALUE:

\$30million

DESIGN BRIEF

To provide structural, building services engineering and landscape design for a state of the art science park. The Istanbul Science Centre will enhance Istanbul's reputation as an international centre of excellence and learning. It was therefore particularly important that the engineering, landscape and architecture reflect Istanbul's rich history and future aspirations and the client's concern towards the environment.

DESIGN INITIATIVES/ACTIONS UNDERTAKEN

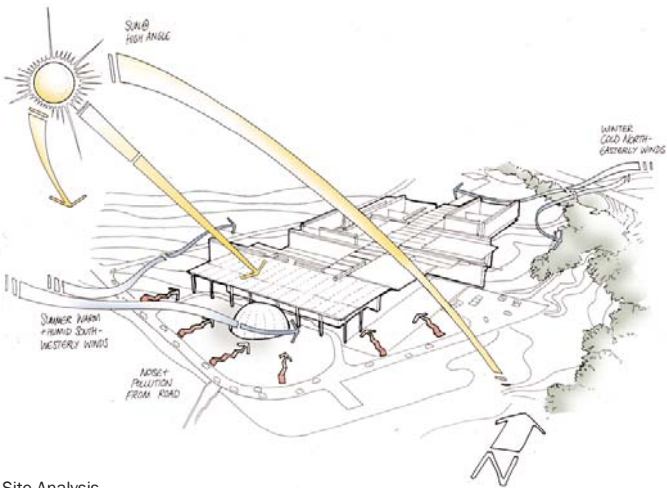
Sustainability was placed at the top of the agenda and the client's brief requested the building be designed in response to these major European/Asian and global issues. The building had to take into account the climate conditions of Turkey in order to reduce the construction, installation and the operation impacts of the various engineering elements of the building.

The design responded to these demands by utilising an innovative combination of the structural elements and renewable and low energy systems including passive cooling and ventilation techniques and innovative use of double skin walls incorporating seismic design. The design optimised the building systems to create a unique solution that met the client's design brief whilst designing the bio-climatic systems to take advantage of the beneficial climate in Istanbul at certain times of the year.

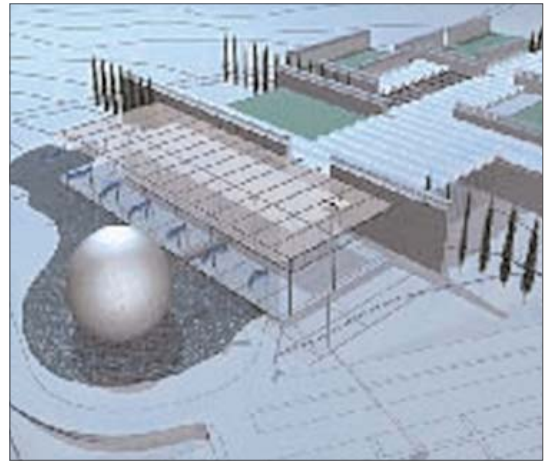
The landscape proposals sought to develop the landscape as not only an extension of the building but as an additional exhibit within the science park. The landscape objectives were:

- Develop the landscape as a setting with a cohesive treatment that unifies the whole site.
- Develop the site as a 'gateway' to the Technical University and the Techno Park.
- Develop the landscape as a series of outdoor experiences related to the internal programme.
- The landscape must stimulate all of the senses with a specific sensory garden.
- Integrate interactive elements within the landscape to introduce exploration and fascination.
- Provide opportunities for understanding and contact with nature and natural processes highlighting Turkey's unique biodiversity.
- Include demonstrations of the water cycle including a 'living machine', visible collection of runoff and control of water.

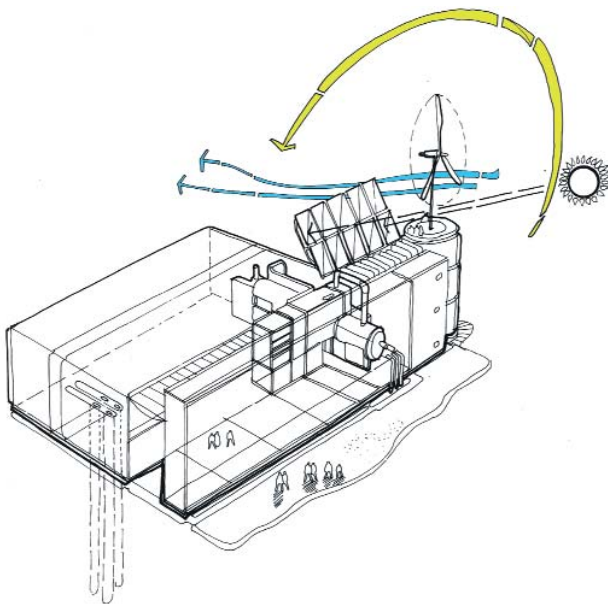
London UK Office
T: +44 (0)20 7440 8282
F: +44 (0)20 7440 8292
E: admin@battlemccarthy.com
www.battlemccarthy.com



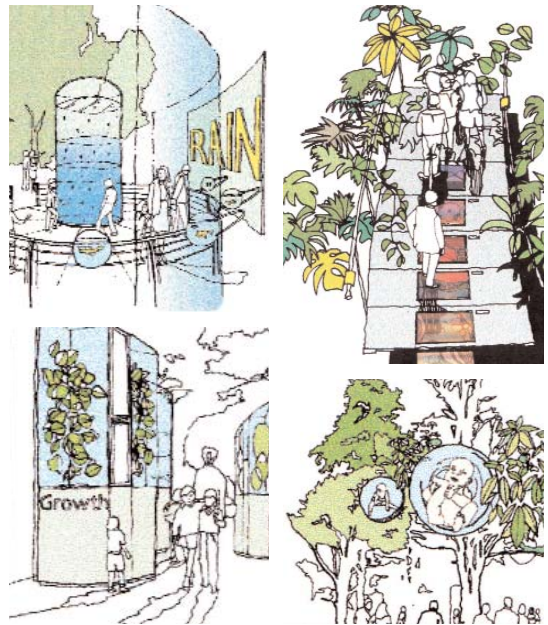
Site Analysis



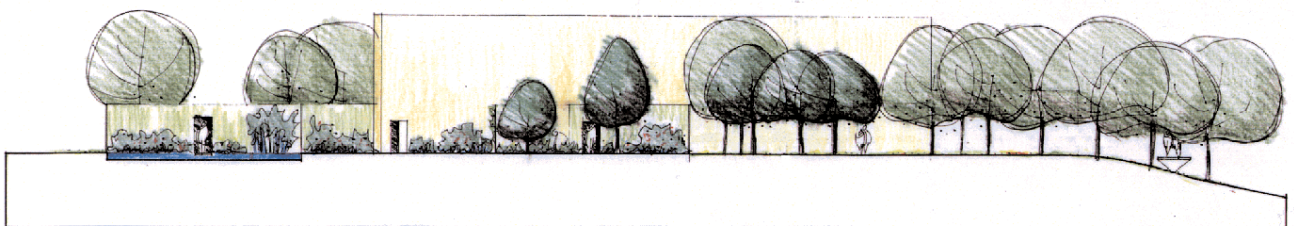
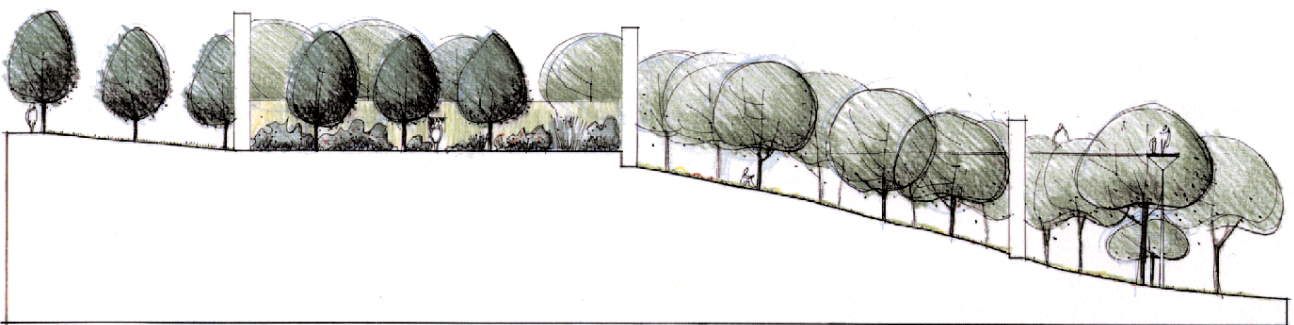
Model



Environmental Operation



Interpretive Landscapes



Landscape Sections