

BATTLE McCARTHY©

Consulting Engineers & Landscape Architects



PROJECT:

Arts Instructional Centre, Rockford

CLIENT:

Rock Valley College

ARCHITECTS:

Booth Hansen & Studio /Gang O'Donnell Architects

BM SERVICES:

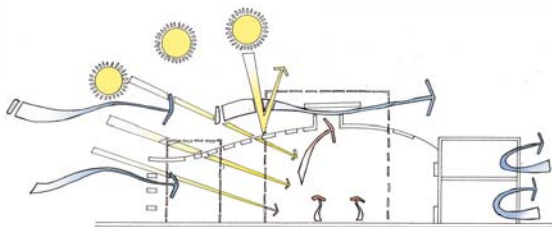
Environmental and (MEP) Engineering

VALUE:

\$30m

DESIGN BRIEF

Competition for new arts centre. It will be designed as a demonstration low energy sustainable building. It will utilise borehole water cooling, solar heating and thermal storage systems.



Environmental Approach

London UK Office
T: +44 (0)20 7440 8282
F: +44 (0)20 7440 8292
E: admin@battlemccarthy.com
www.battlemccarthy.com

DESIGN INITIATIVES/ACTIONS UNDERTAKEN

The Instructional Centre will house 145,000 SF arts spaces to bring together various college art programs and departments.

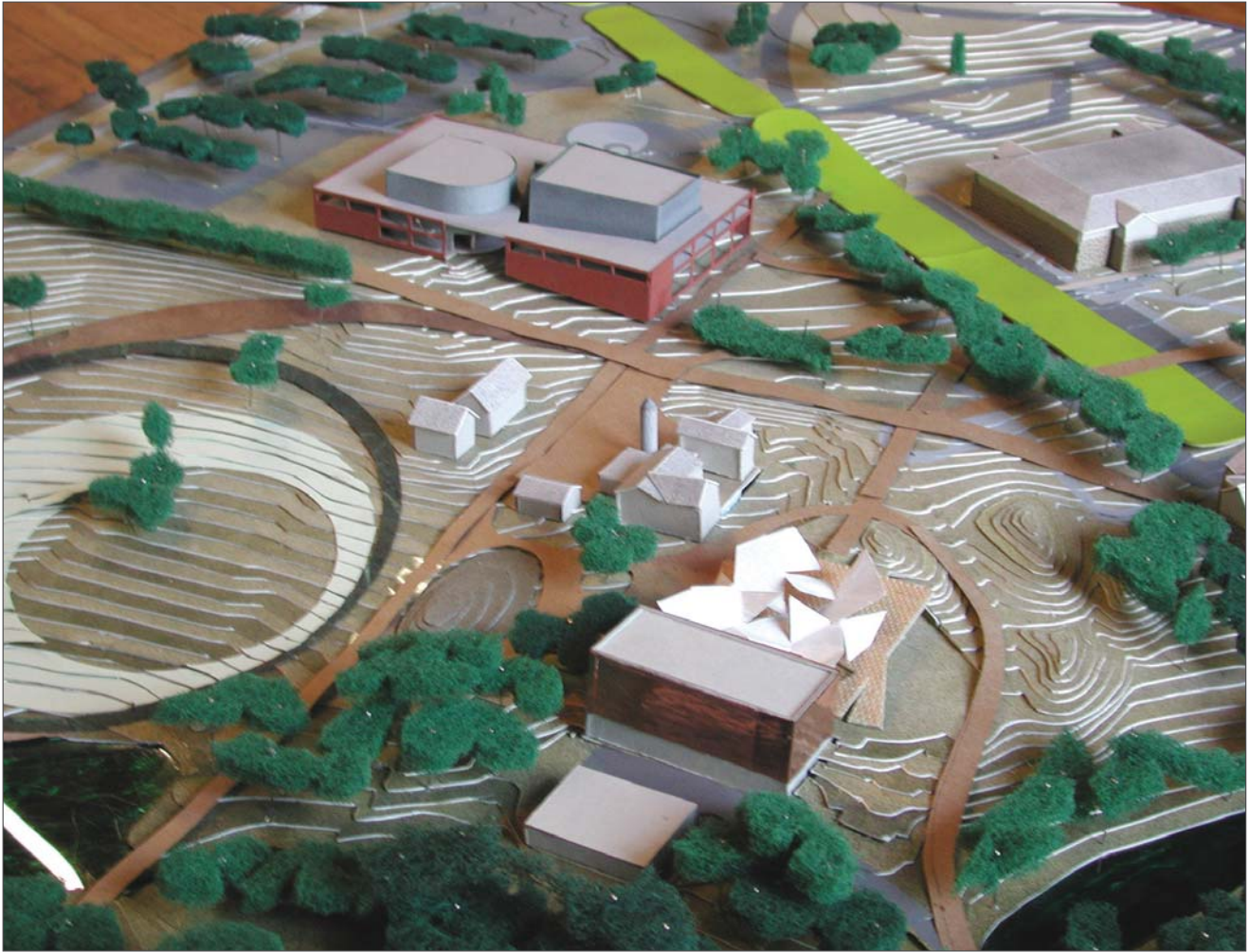
The program includes;

- 750 seat performance hall
- 300 seat thrust stage theater
- ensemble rooms
- stage set areas
- classrooms
- design studios
- support spaces.

The two main theatres utilise their high thermal mass to modify internal temperatures to reduce energy use in the building.

Battle McCarthy were involved in the competition submission which was won and has since been developed by Booth Hansen and Studio Gang/O'Donnell. Construction will begin on site in 2006





Full site model



CAD view from east



CAD view from north by night