

BATTLE McCARTHY ©

Consulting Engineers & Landscape Architects



PROJECT:

Salway Performing Arts Centre

CLIENT:

Newham Borough Council

ARCHITECTS:

Levitt Bernstein

BM SERVICES:

Environmental Engineering

VALUE:

£12million (approx)

DESIGN BRIEF

As part of the regeneration of Stratford, East London, Battle McCarthy were appointed for full design services for the redevelopment of the existing, Grade 1 listed Theatre Royal and a new Performing Arts Centre. The works to the Theatre Royal included the addition of air conditioning to the 350 seat auditorium within the tight constraints applied by English Heritage.

London UK Office
T: +44 (0)20 7440 8282
F: +44 (0)20 7440 8292
E: admin@battlemccarthy.com
www.battlemccarthy.com

DESIGN INITIATIVES/ACTIONS UNDERTAKEN

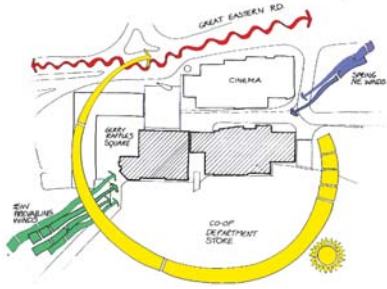
The Performing Arts Centre comprises a 400 seat auditorium, dance studio for 80 dancers, small 120 seat venue and two studios together with public areas including bar and restaurant.

Battle McCarthy were responsible for:

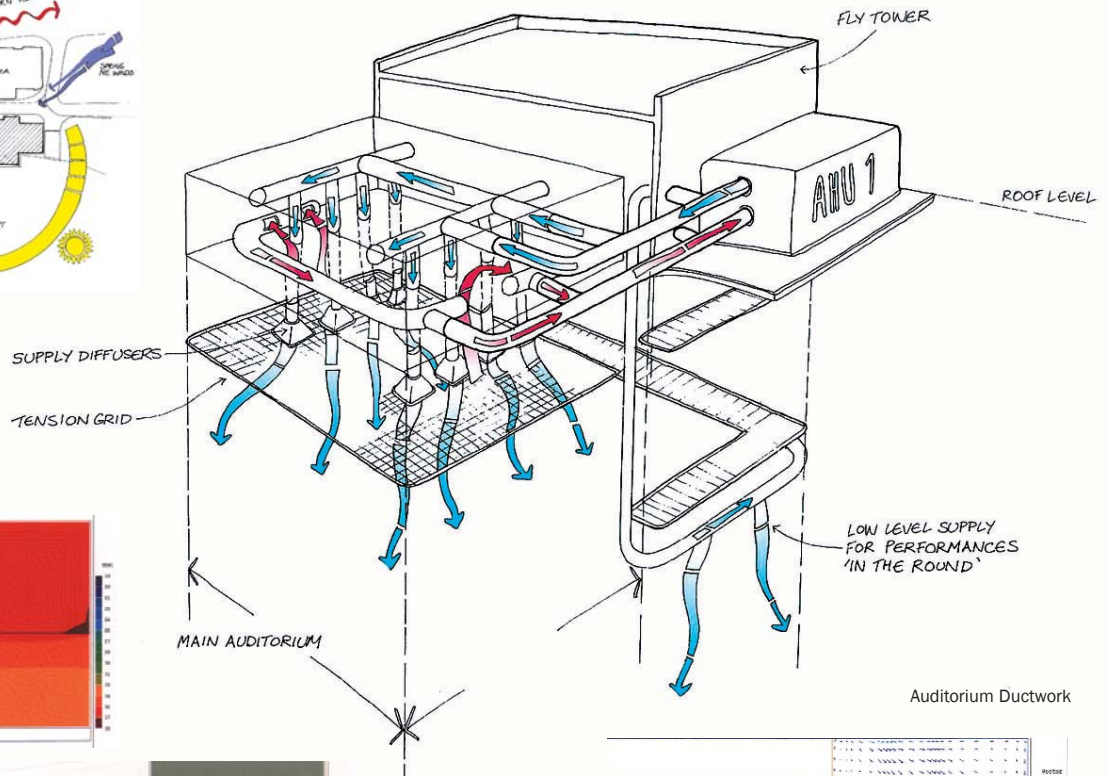
- Full Mechanical, Electrical and Public Health duties
- Specialist Environmental Analysis including:
 - CFD Modelling of Air movement and environmental conditioning in auditoria (full air conditioning for flexible format in main Performing Arts Centre Auditorium allowing performances in the round or with proscenium)
 - Natural ventilation for dance studio and main foyer/bar required year round modelling
 - Daylighting analysis
- Management and co-ordination of specialist consultants
- Site Engineer during construction and commissioning phases



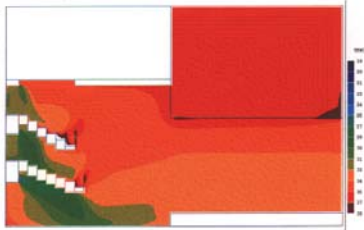
Dance Studio



Site Analysis



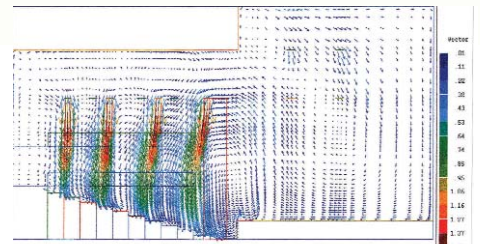
Auditorium Ductwork



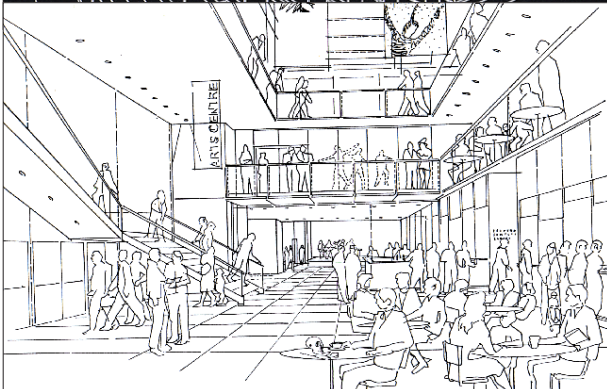
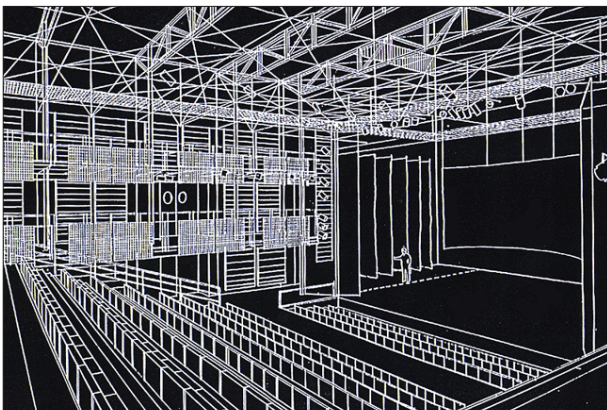
CFD of Existing Auditorium



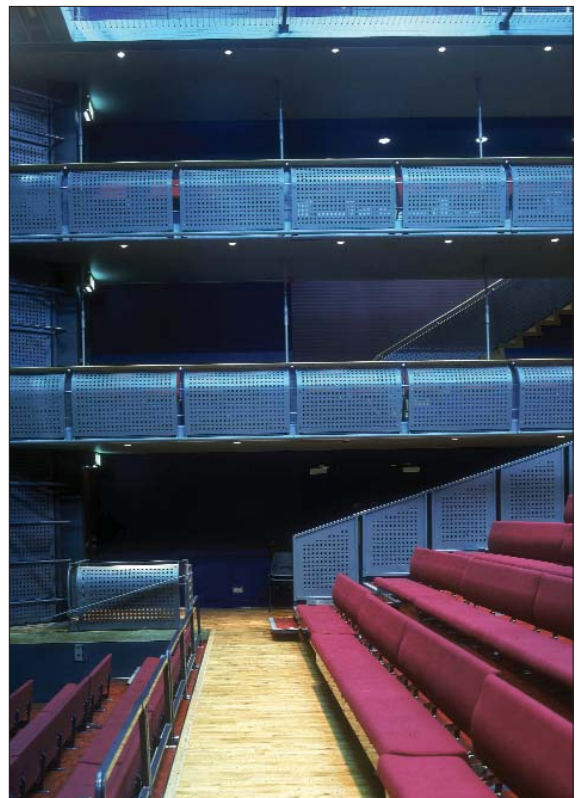
CFD of Proposed Scheme



Velocity Vectors



Interior



Auditorium